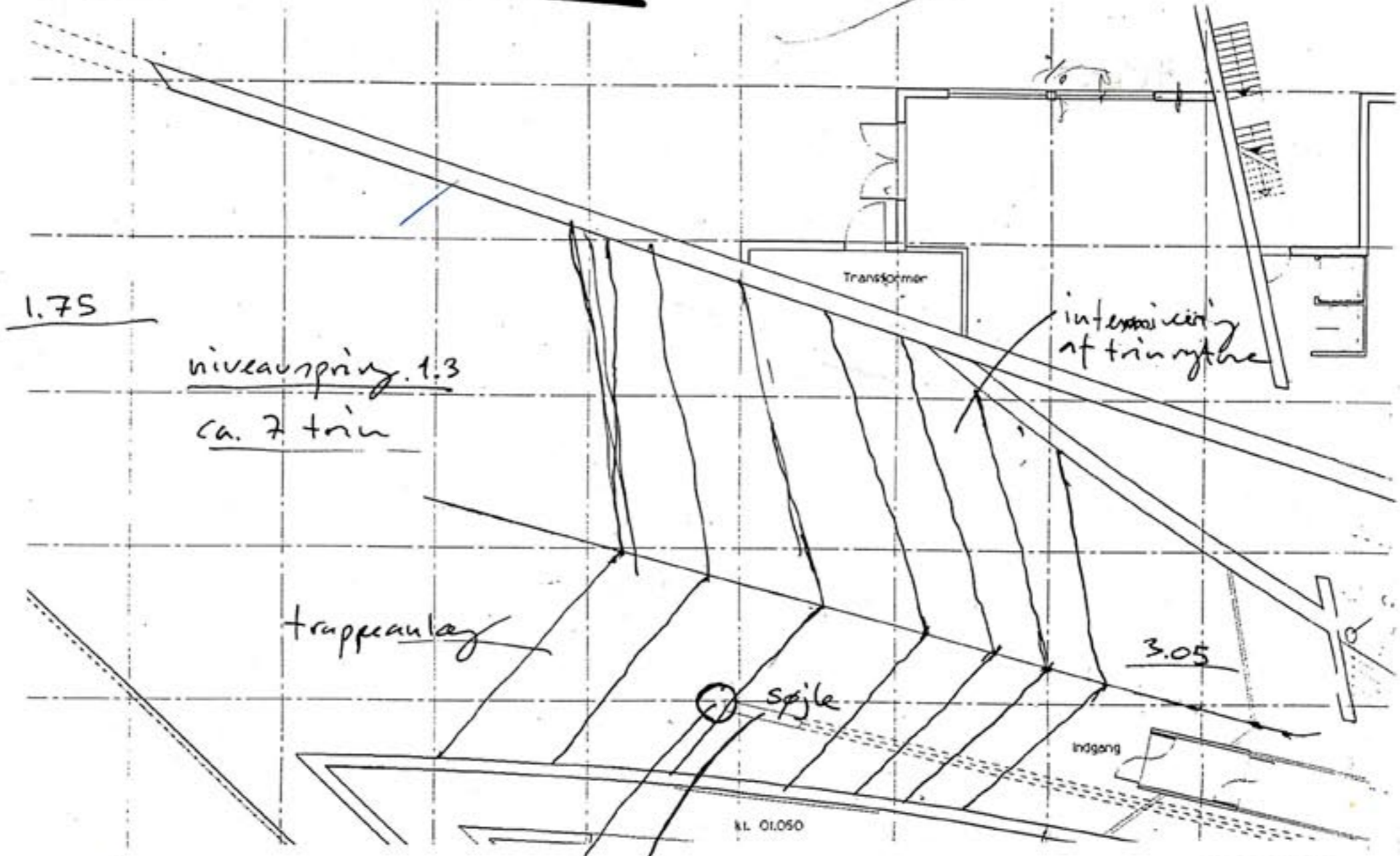


I

# Trappeanlæg

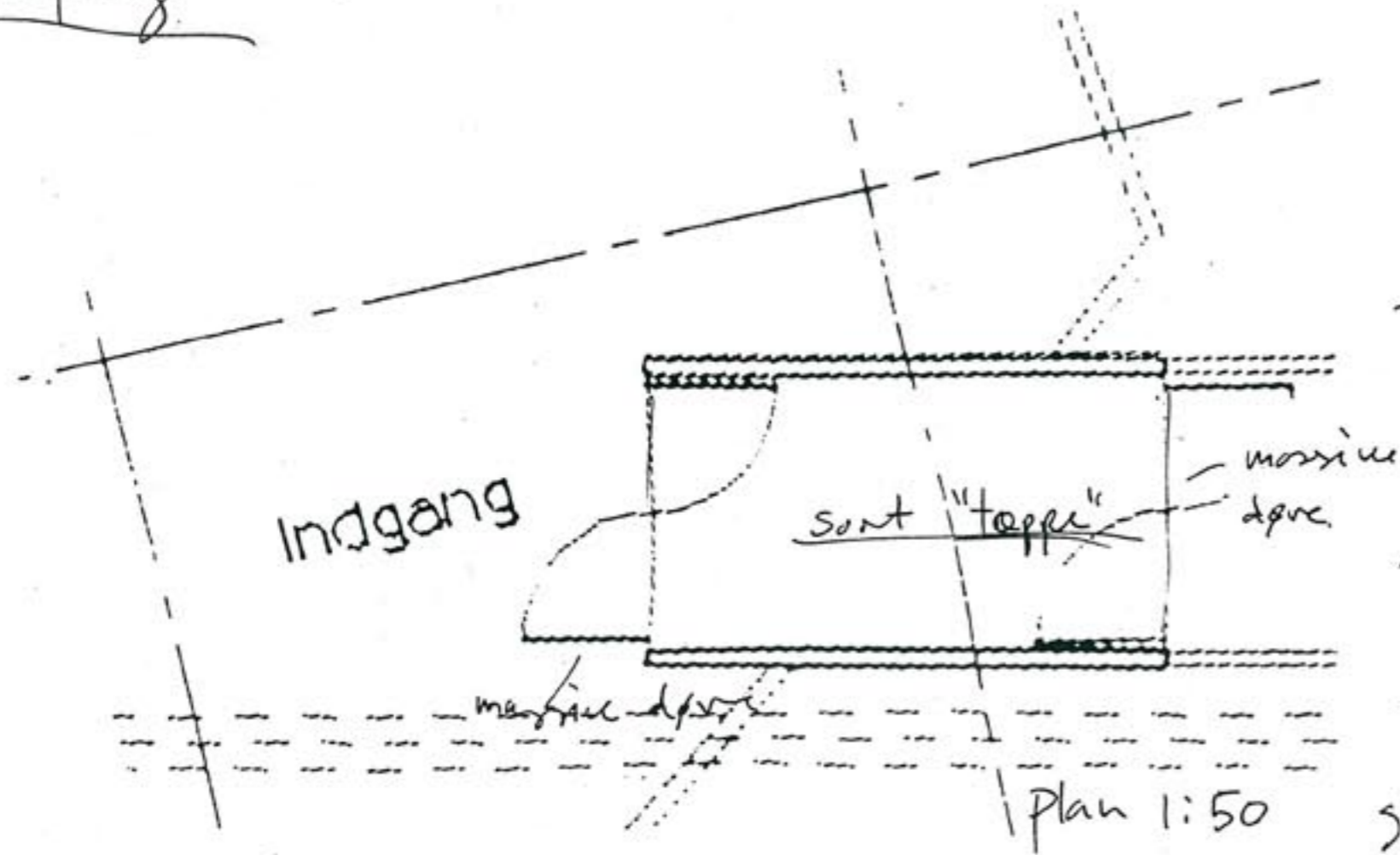
spjle / drager / brønd



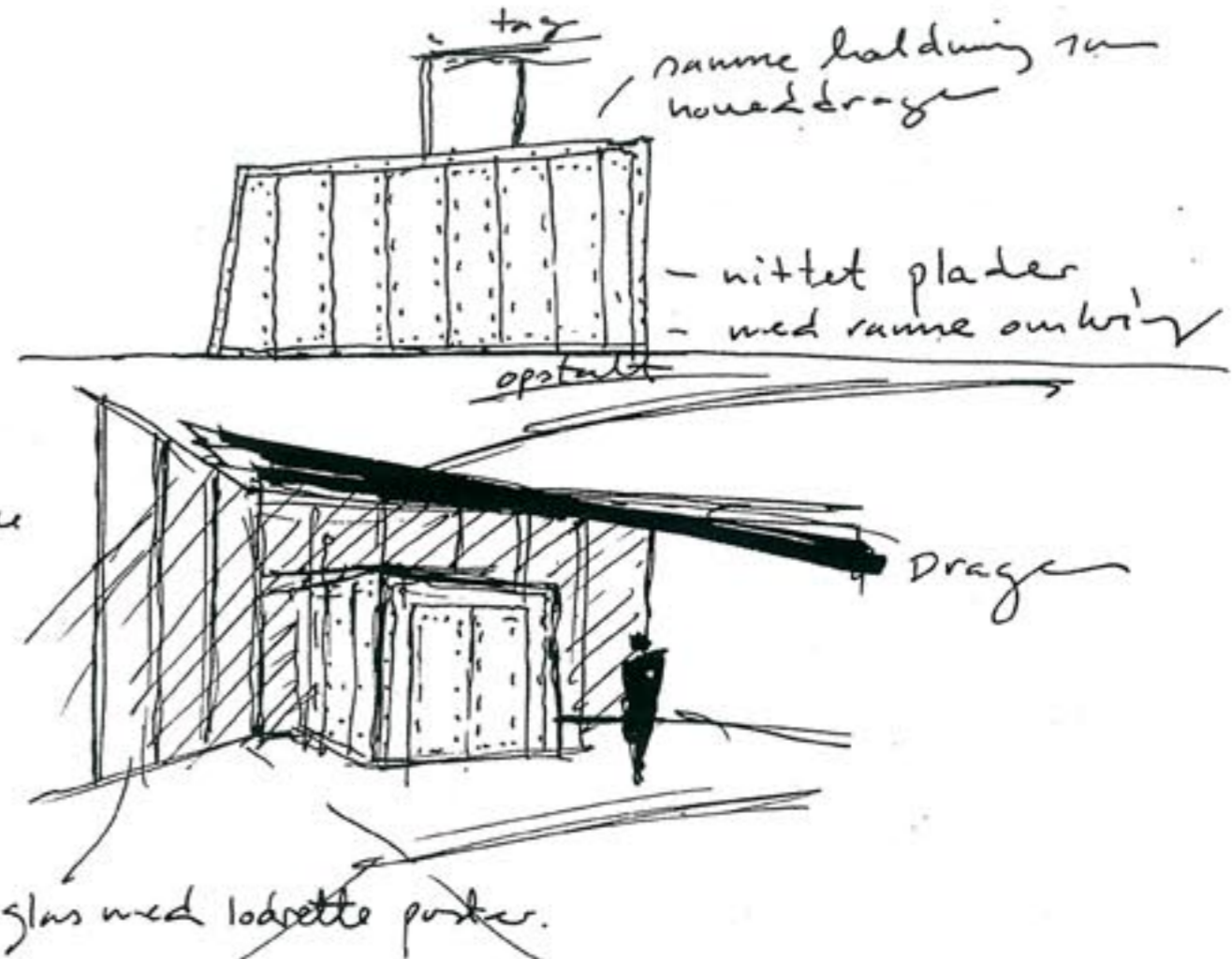
Plan 1:200



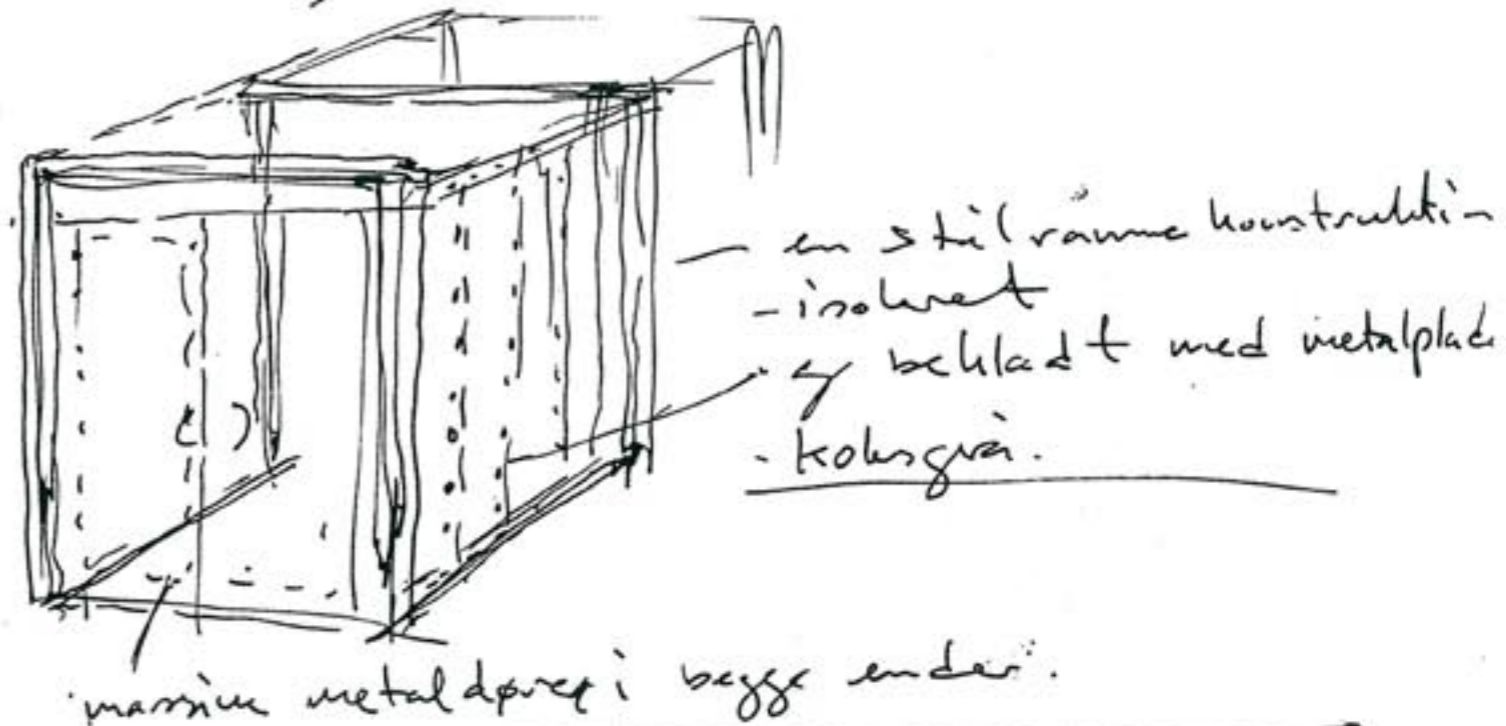
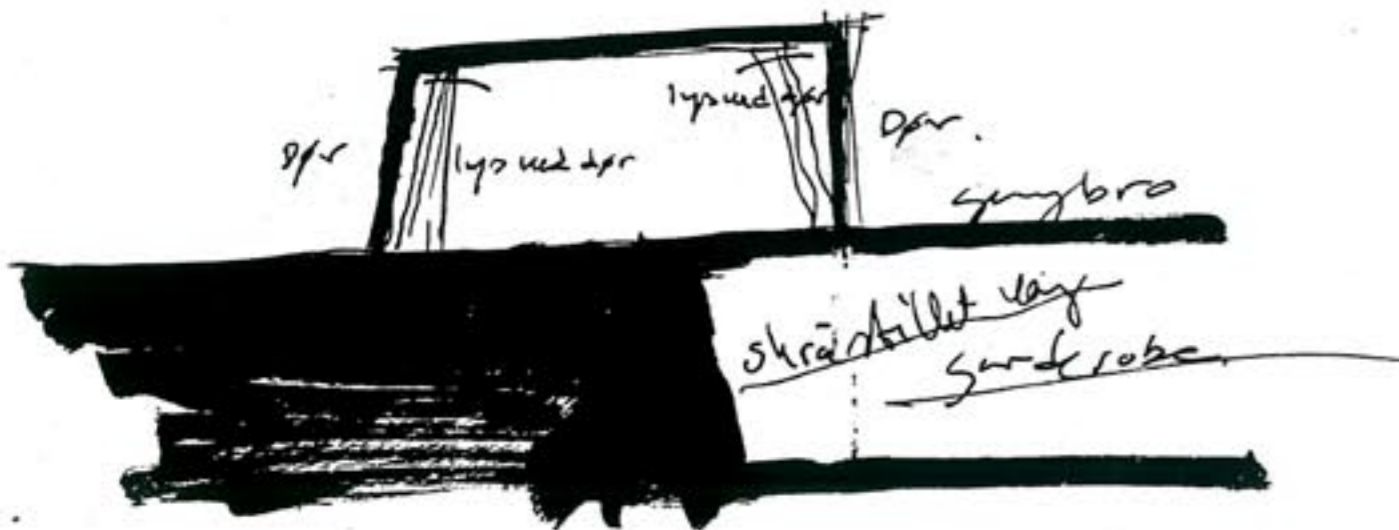
II  
Vindfang



Vindfang

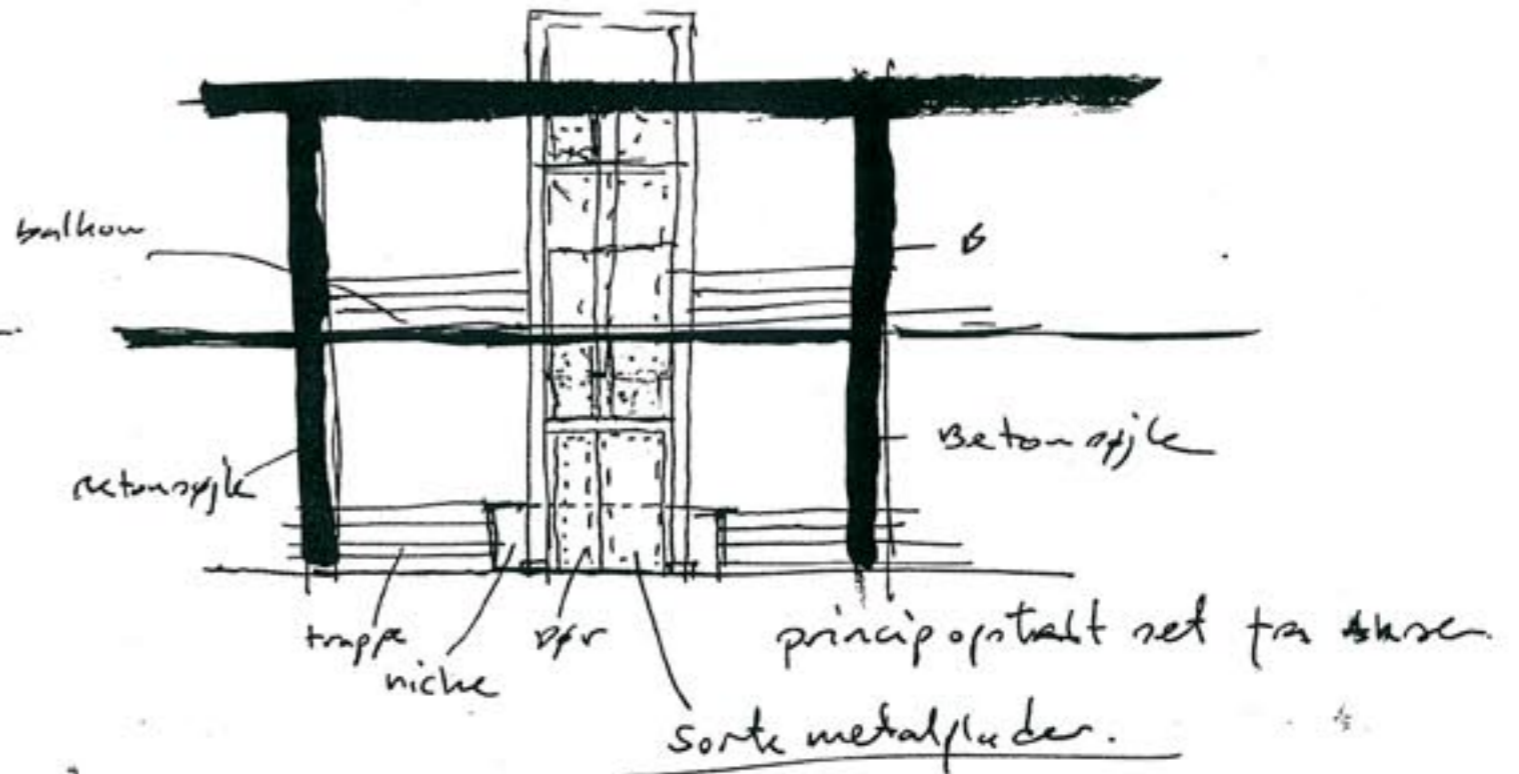
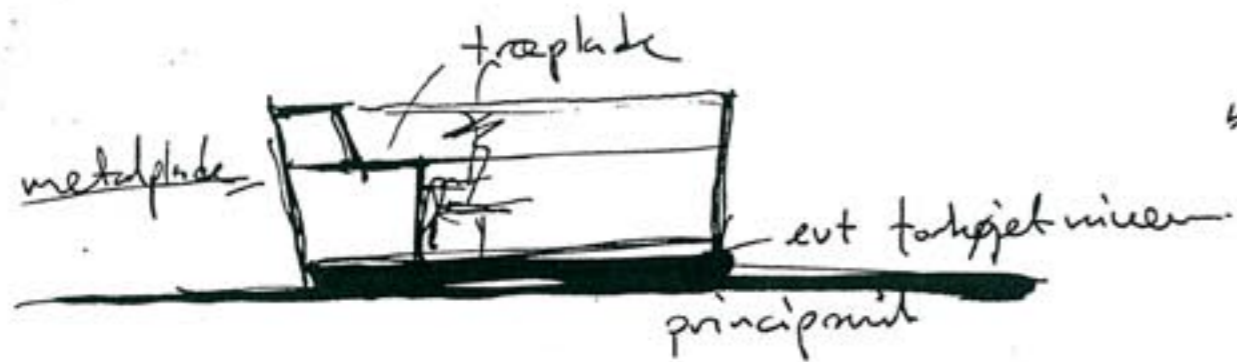
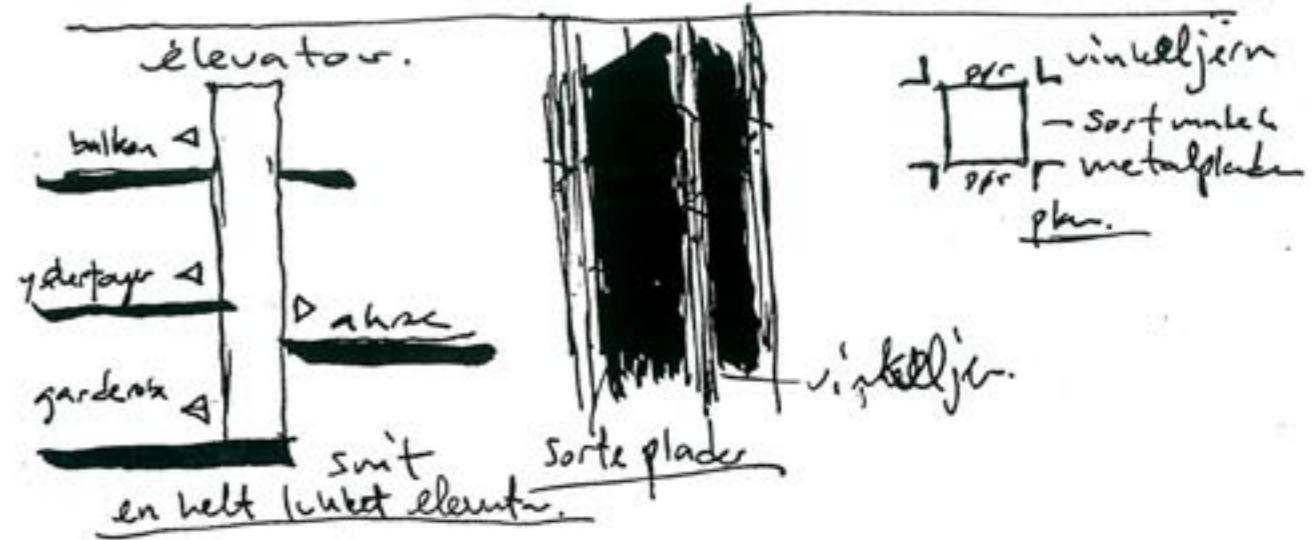
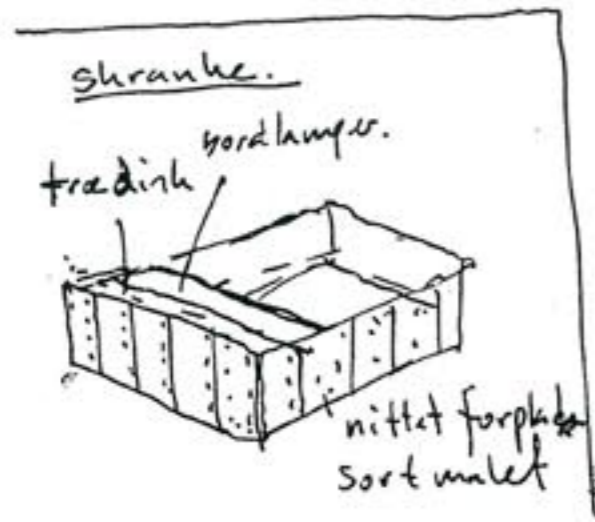


lys princip.





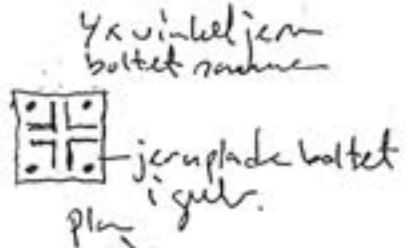
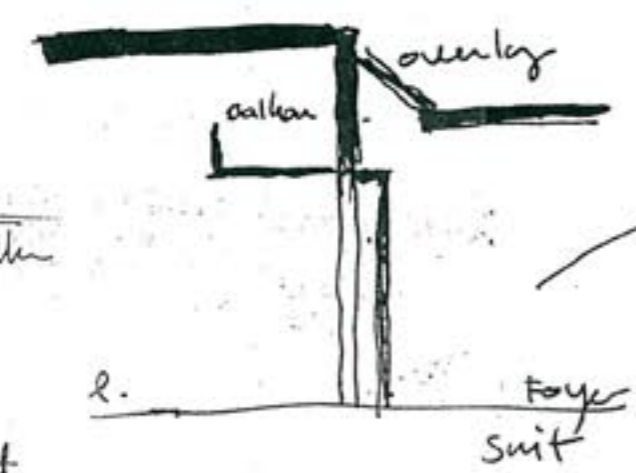
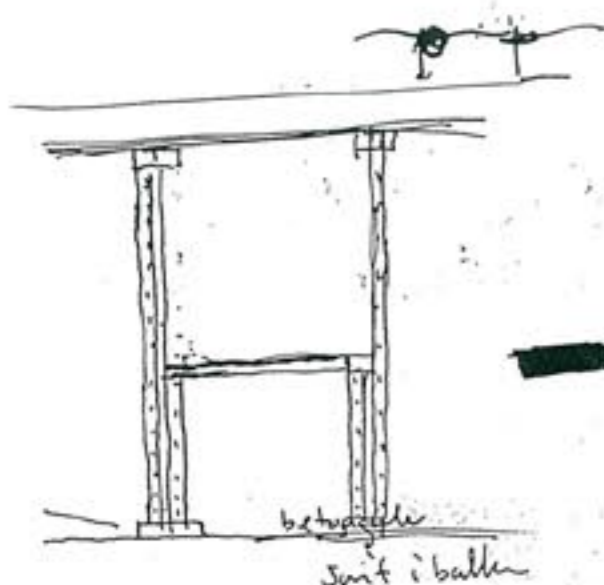
# III ydertoyer tornat



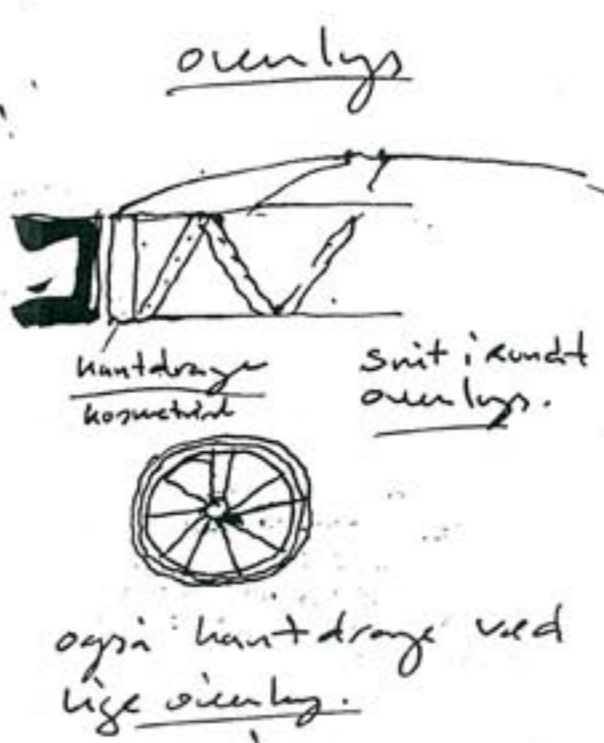
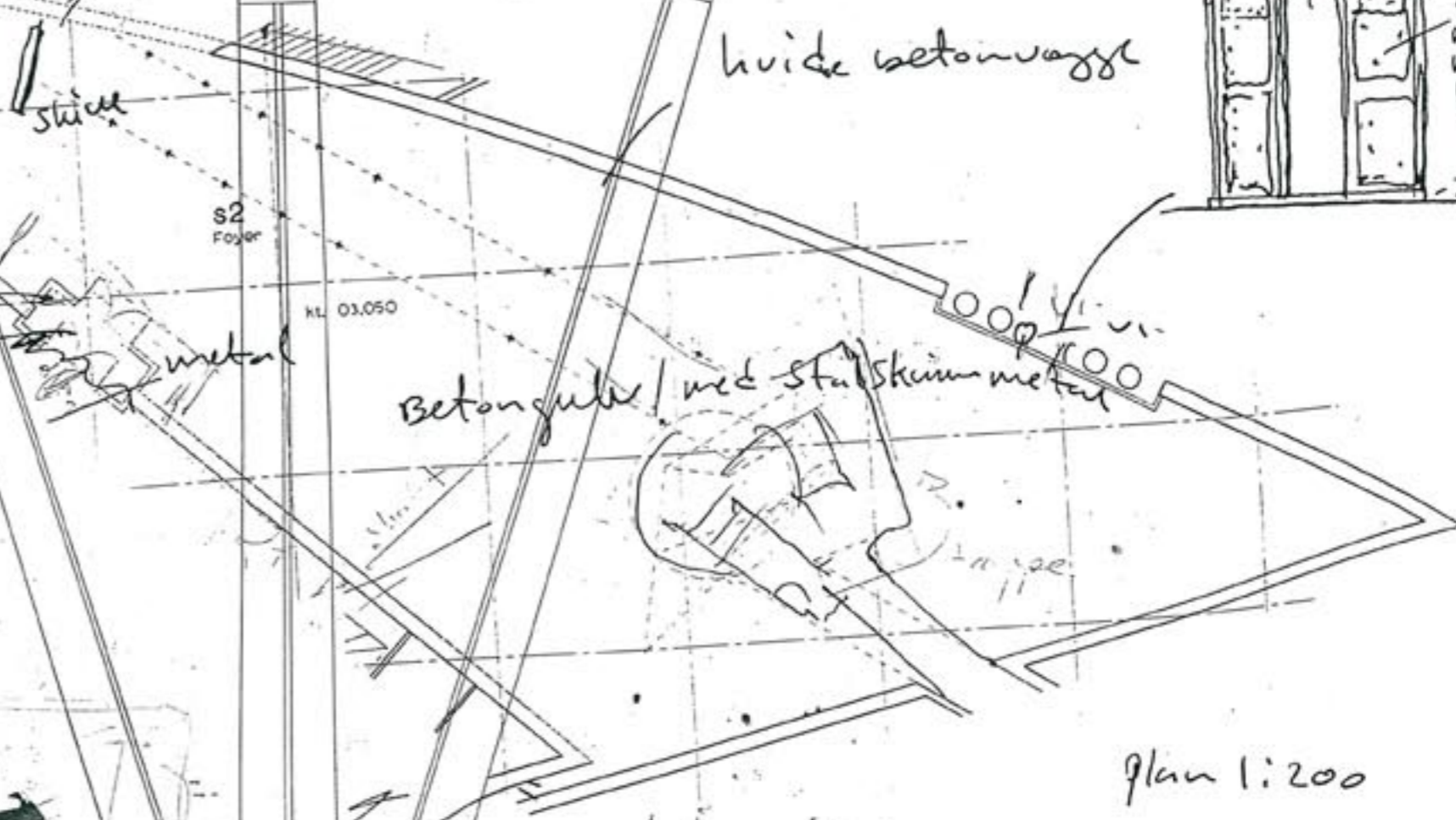
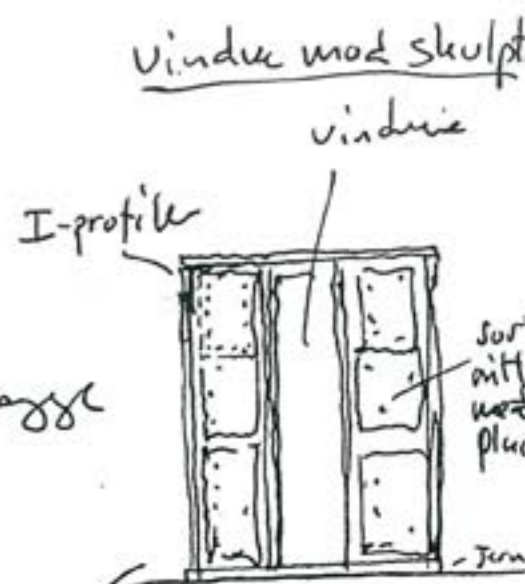
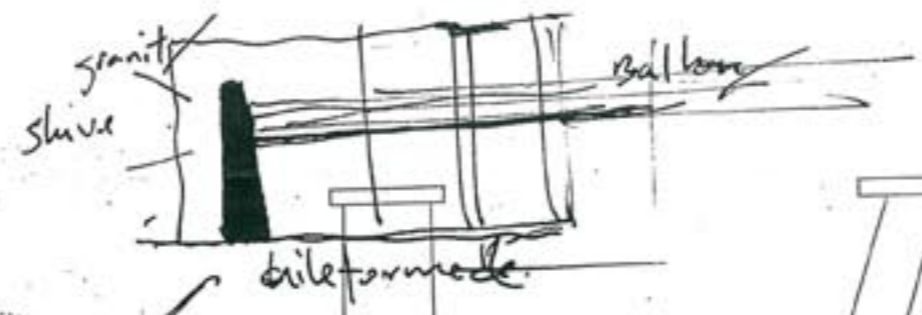
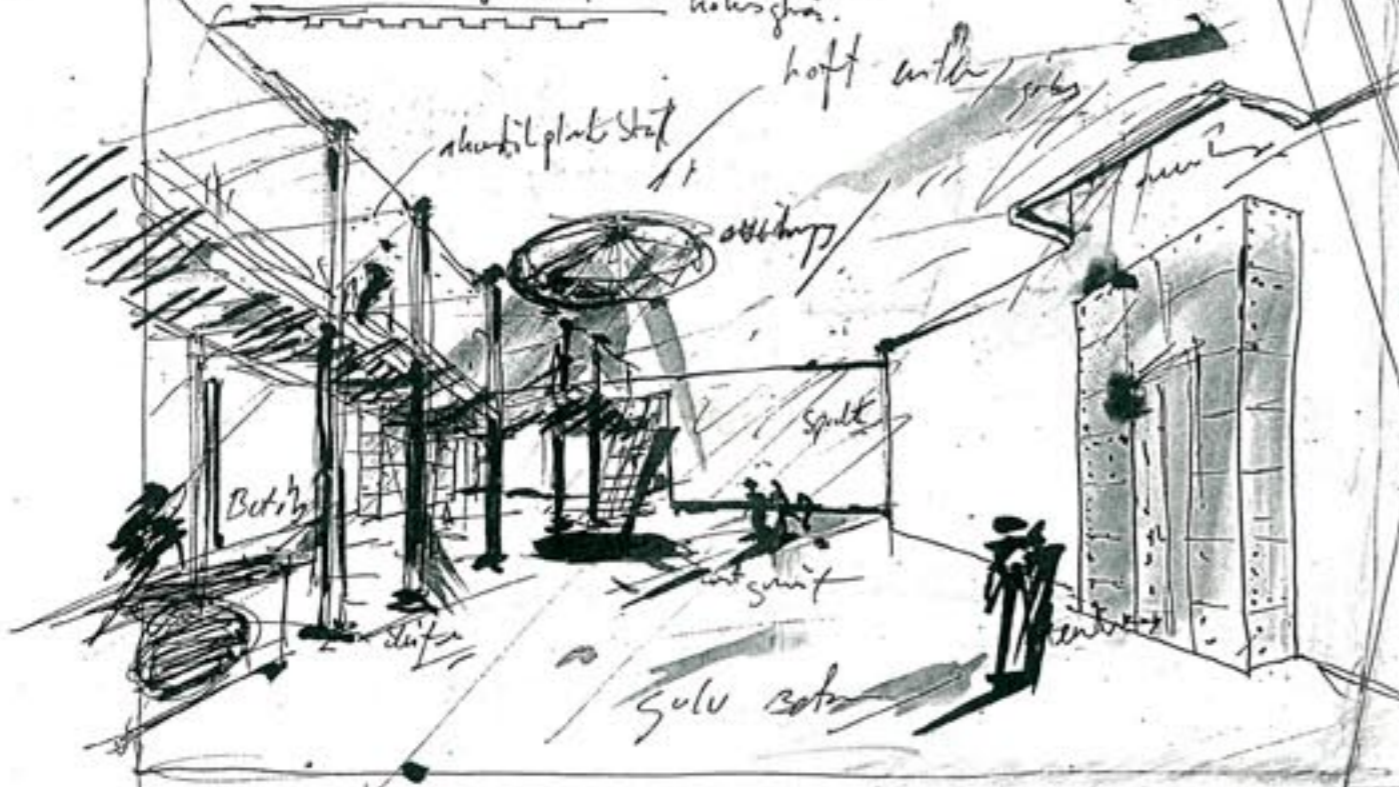
skranke. villetralg/info.



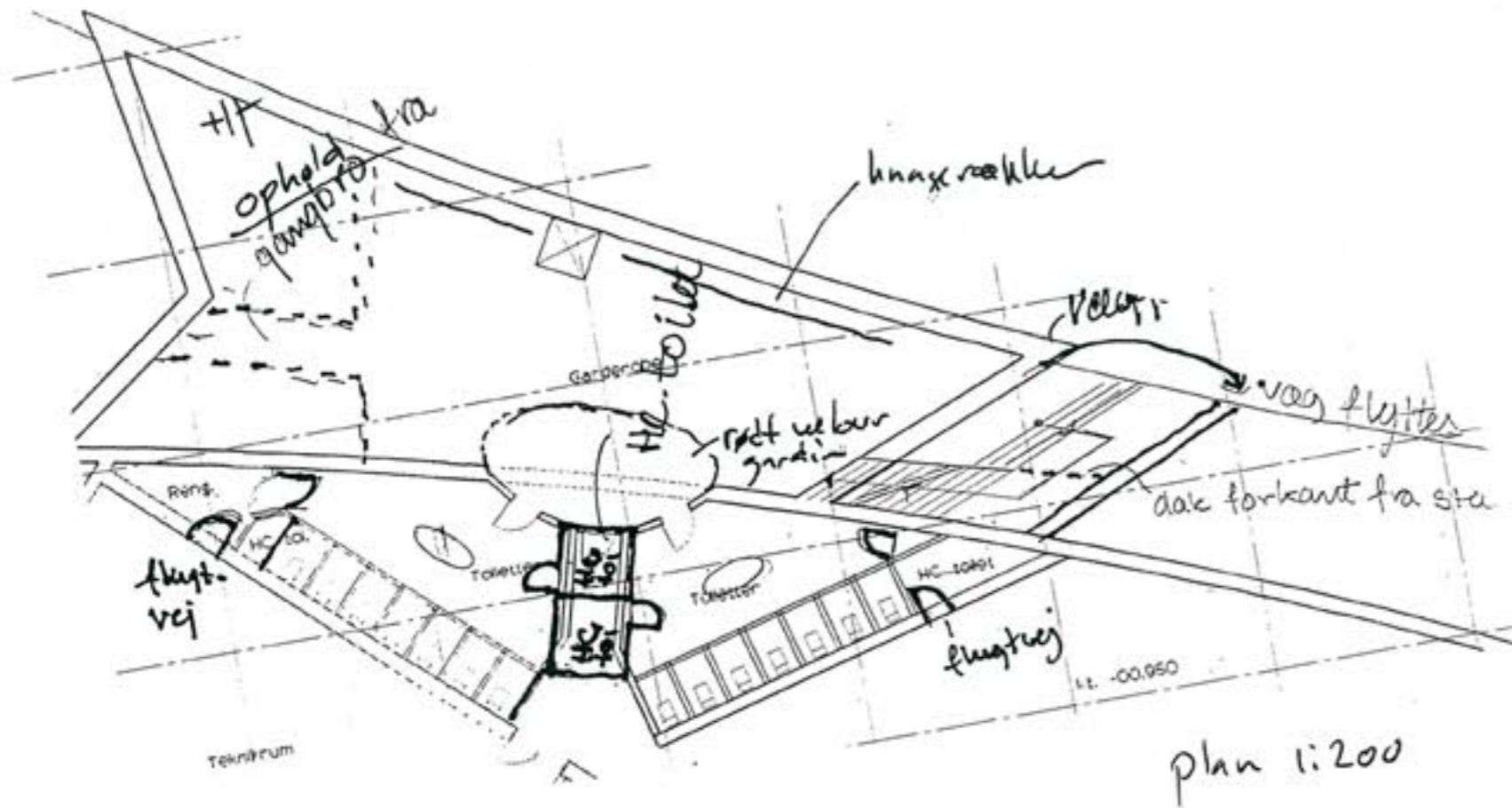
# V Foyer



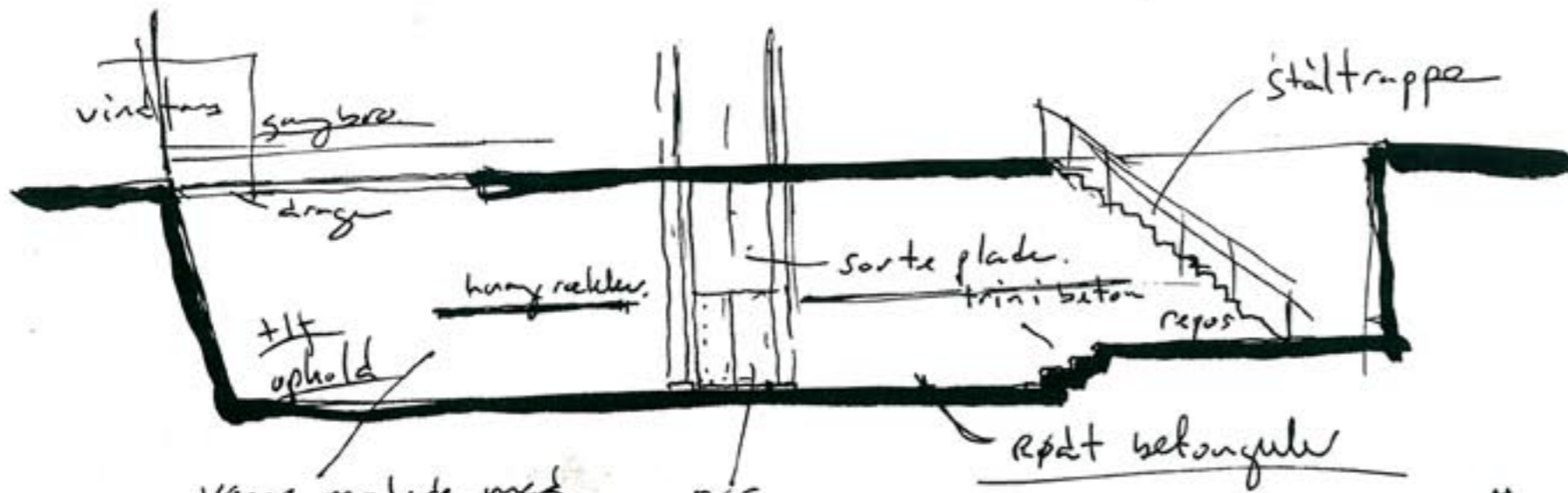
balken belægning underside  
en meget profileret metalplade  
hølsgrænse



IV Garderobe/toilet.

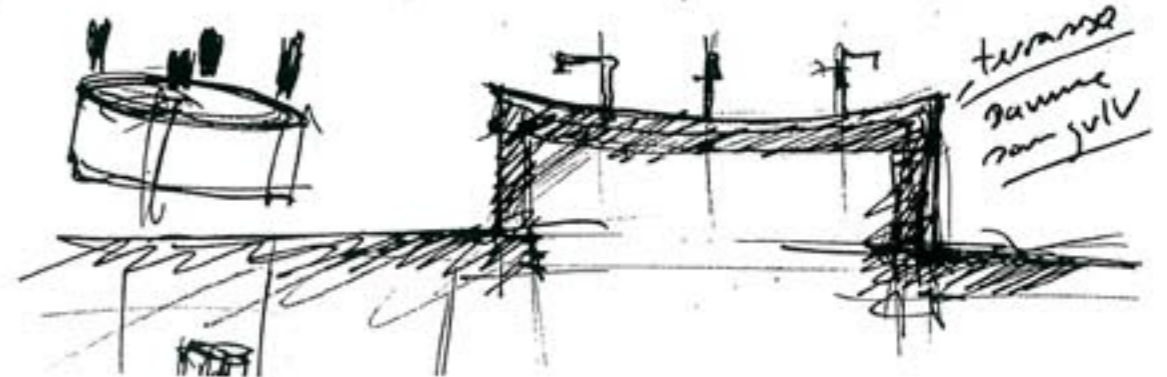


toilet  
hvidt rektangulært  
terrasse.  
spansk dør/hvid  
hvid væg og loft



Vægge malede med linfarve. Venetiansk rød.

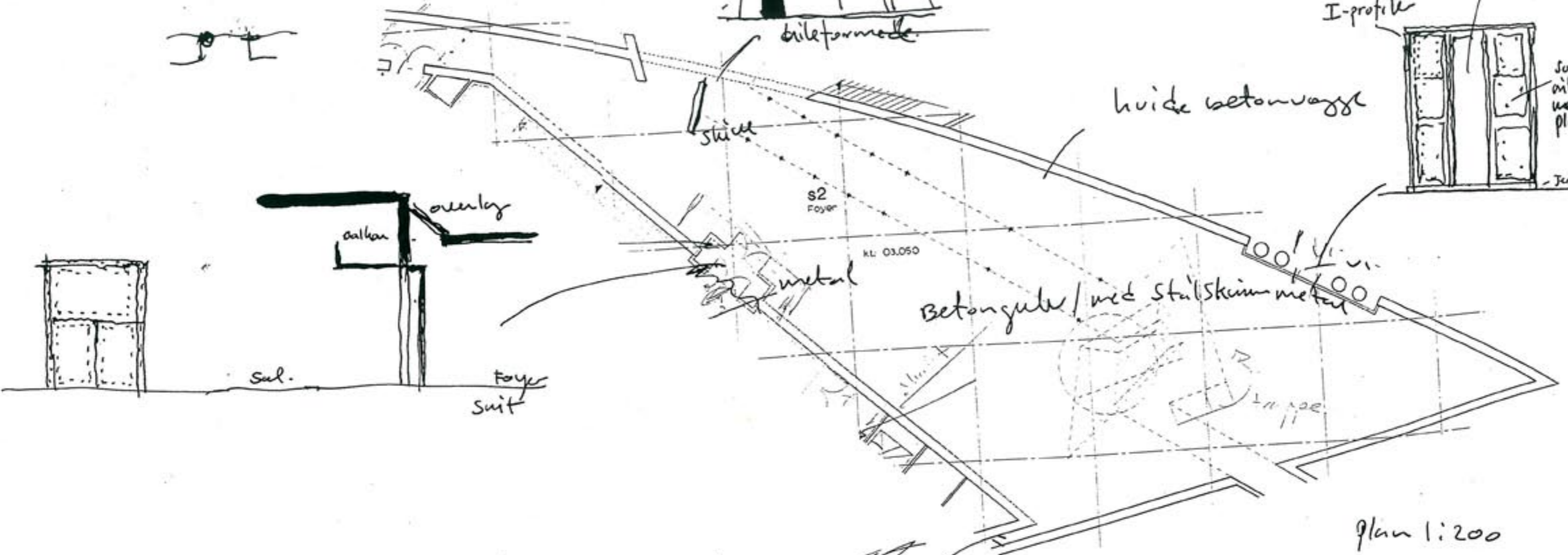
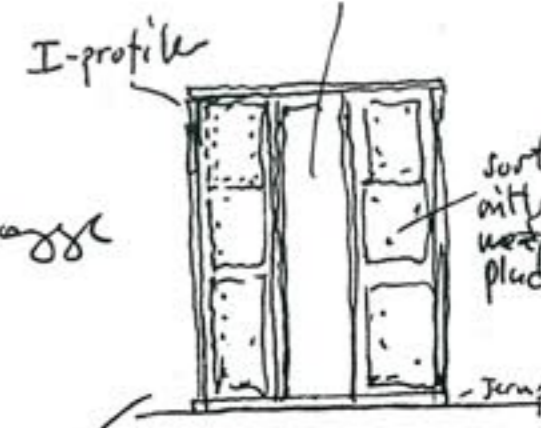
Helt hvidt



V Foyer

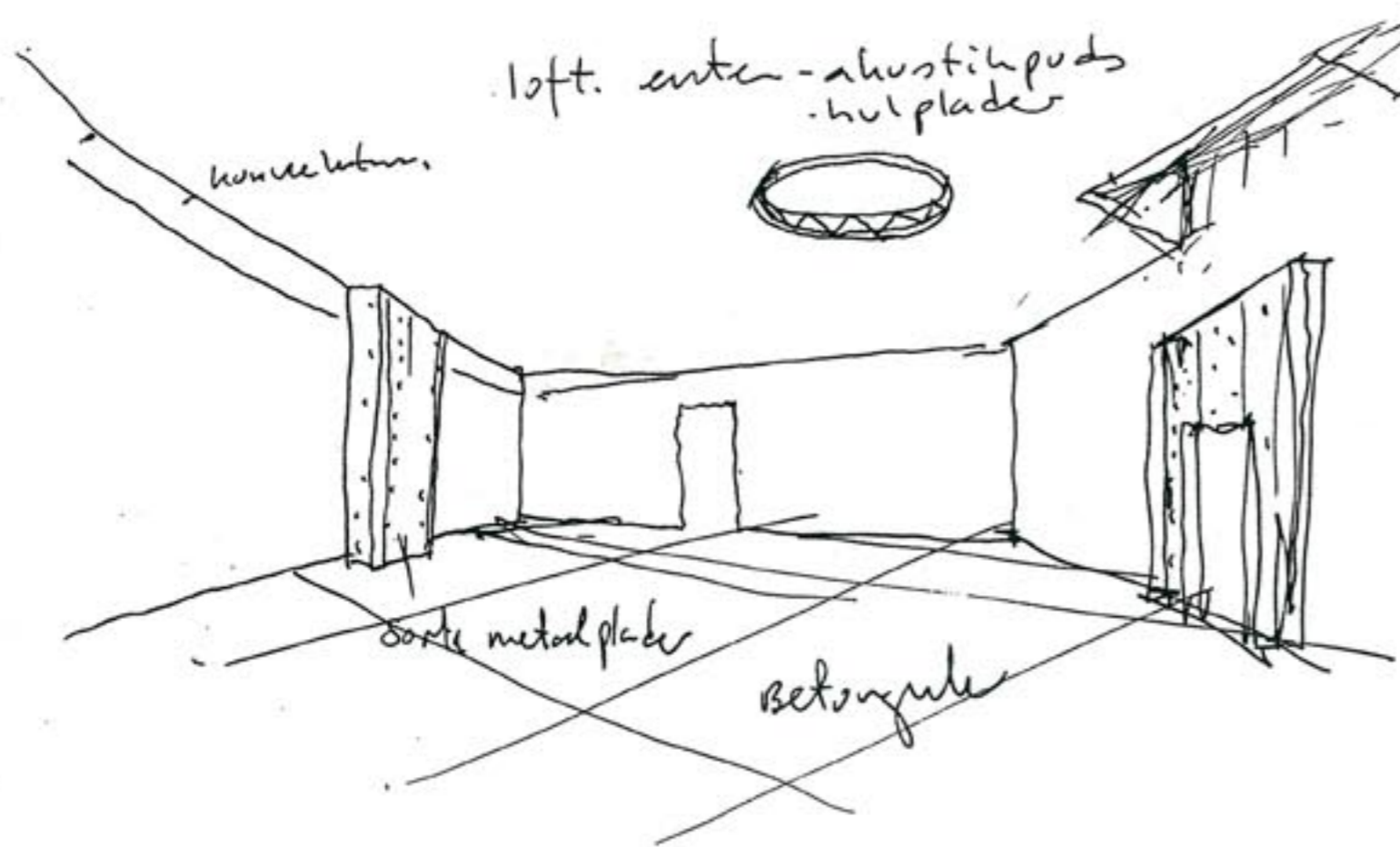


Vindue mod skulptur vindue



plan 1:200

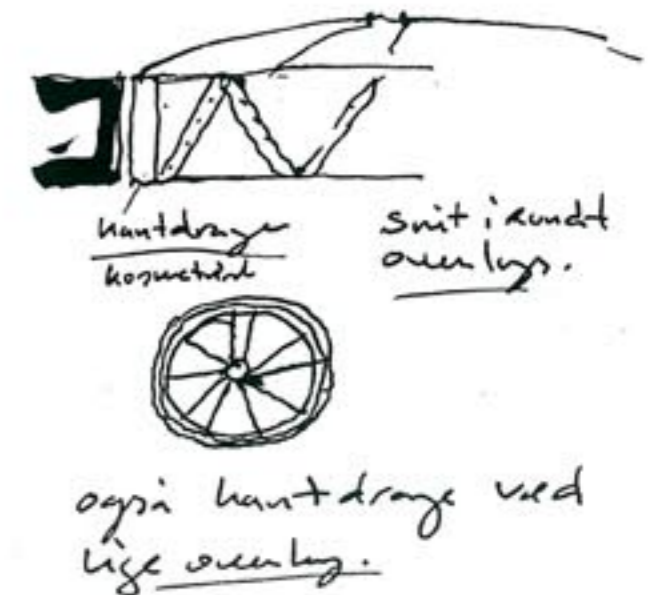
loft. enten - akustikpuds - hulplader



varme-



overlys



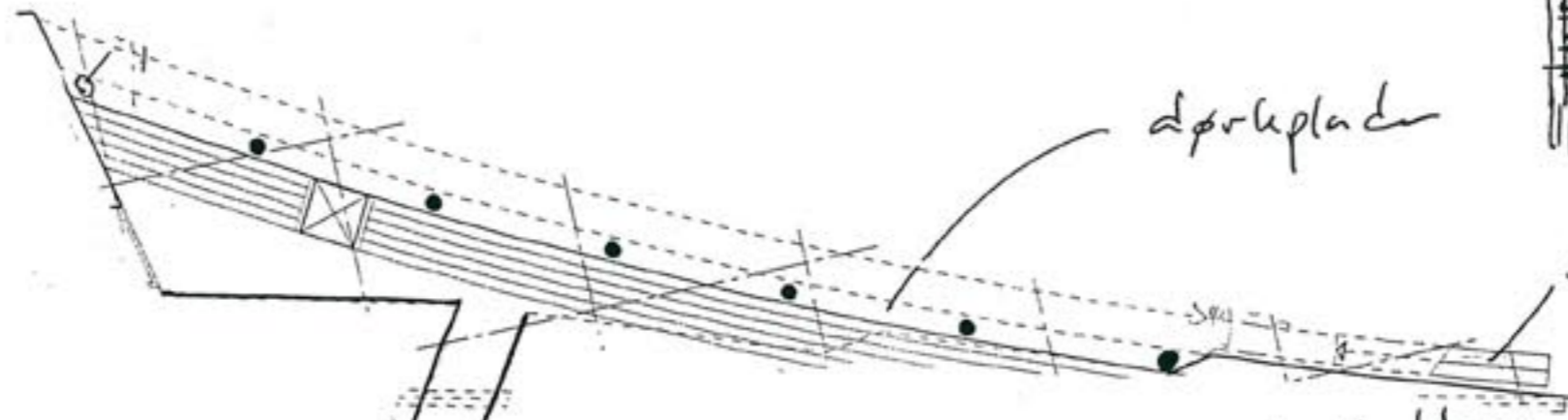
VI Balkon / Butik

gelænder. Runde "vandrør" svejst mellem søjlerne.



dørkplade

stål trappe



butik elev. til balkonen

Balkon. dørkplade

beton skive

jerndrage i loft

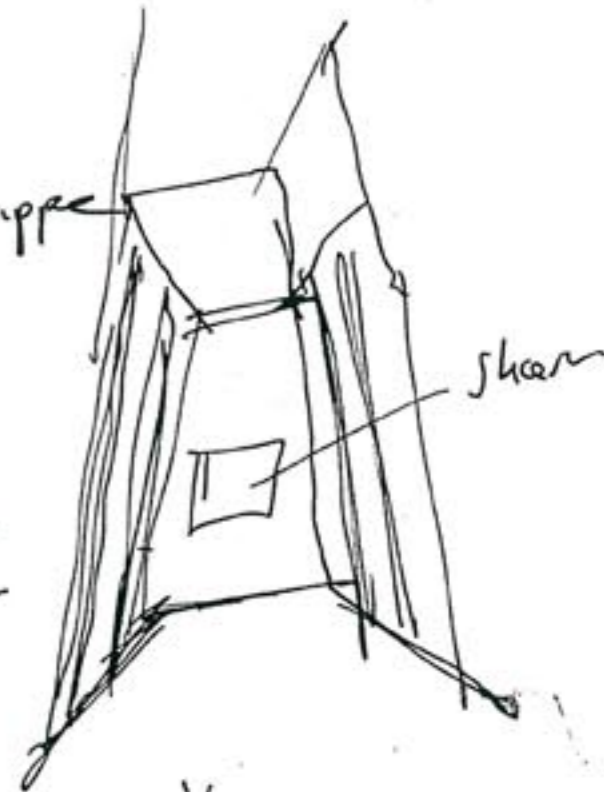
søjlediameter 30cm



sorte søjle

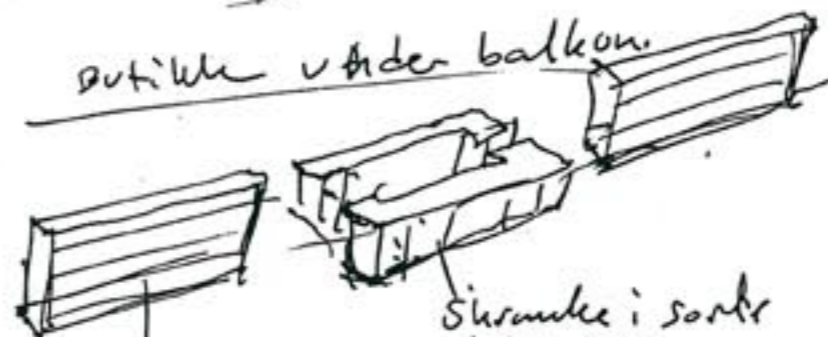
bruset stål

stål trappe



skær

butikkens under balkon



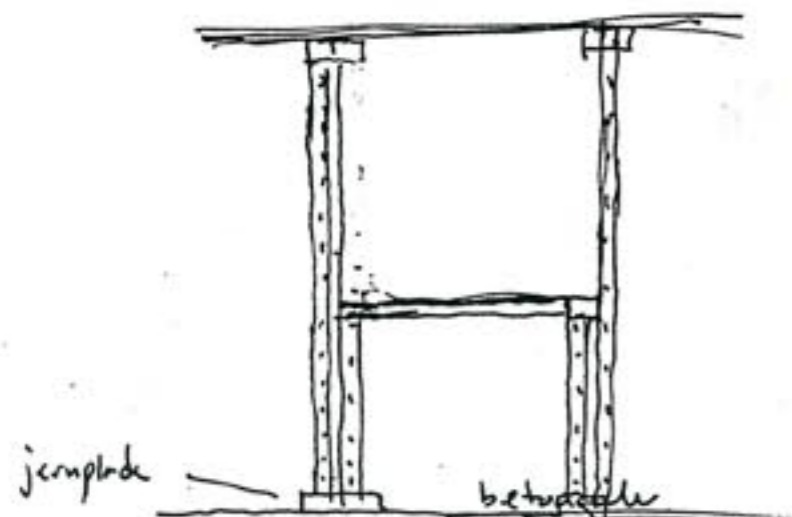
jern rede.

skruer i sorte nitter plade

4x vinkeljern boltet sammen



jernplade boltet på gulv.



jernplade

beton skive

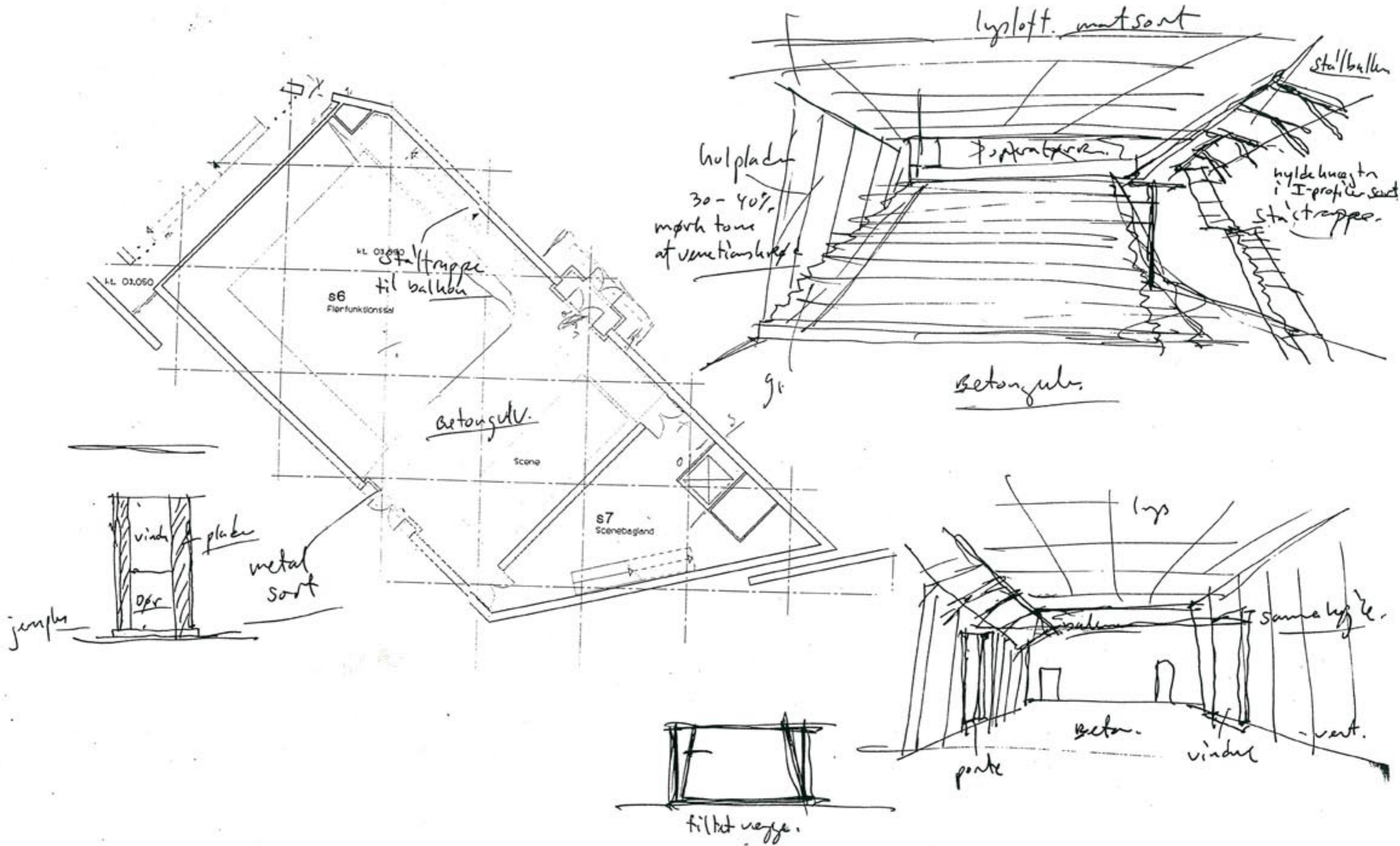
støt i balken

balkon belægning underside en meget profileret metalplade kobbergrøn.

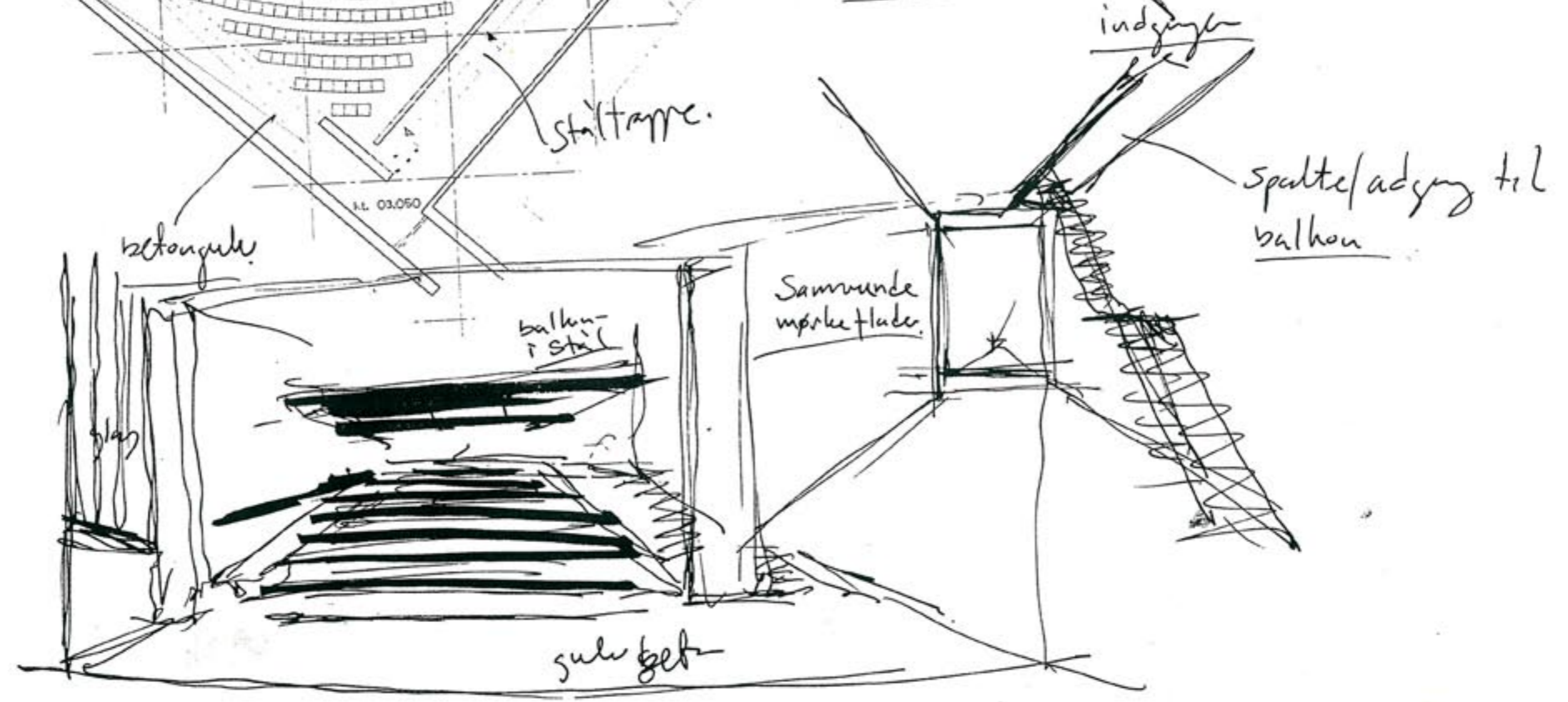
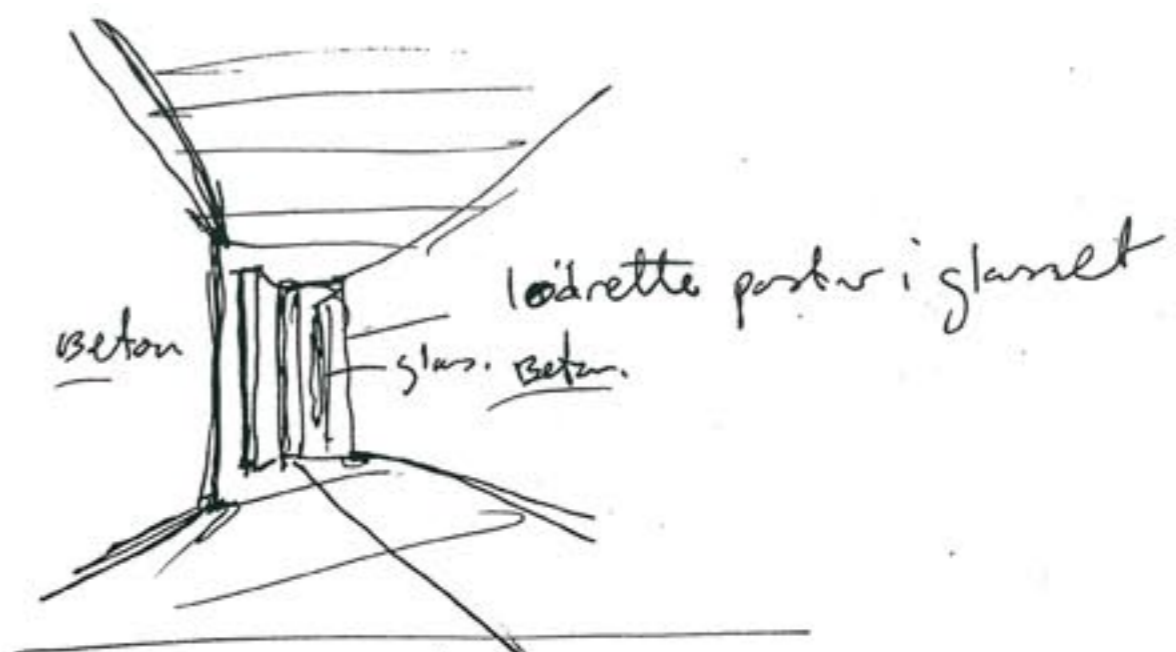
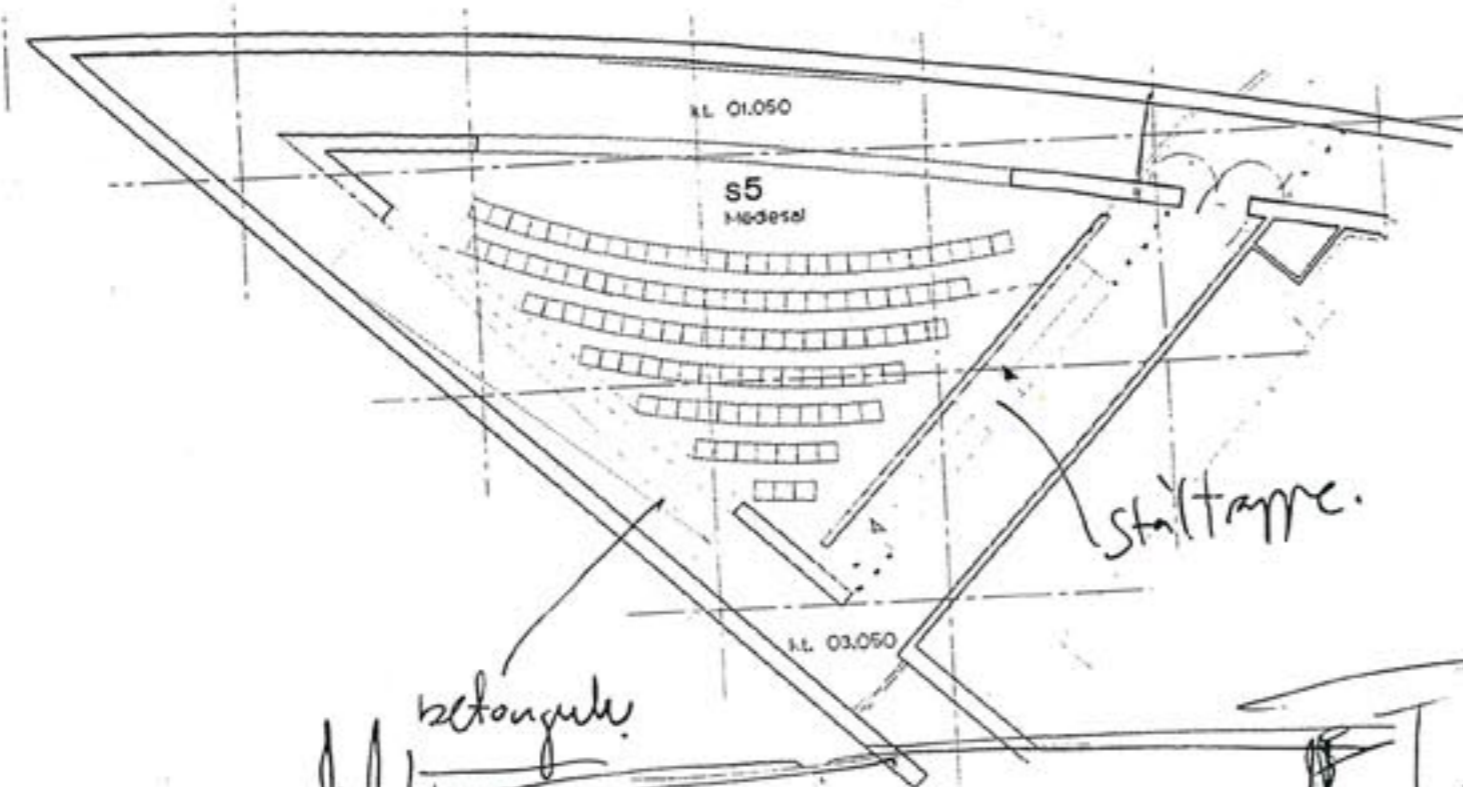
Videren I-profiler belagt med bruset stål



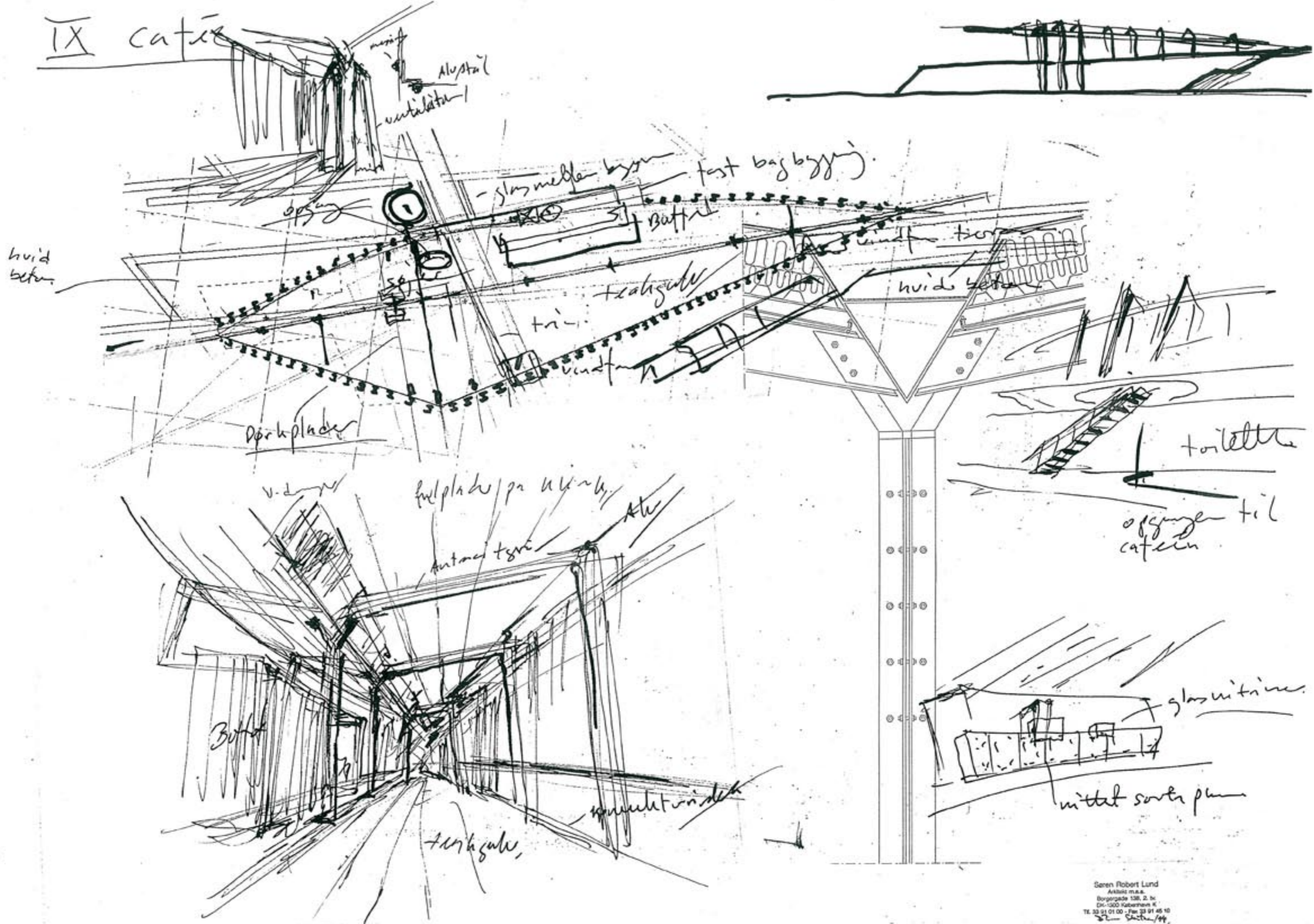
# VII Flerfunktionssal



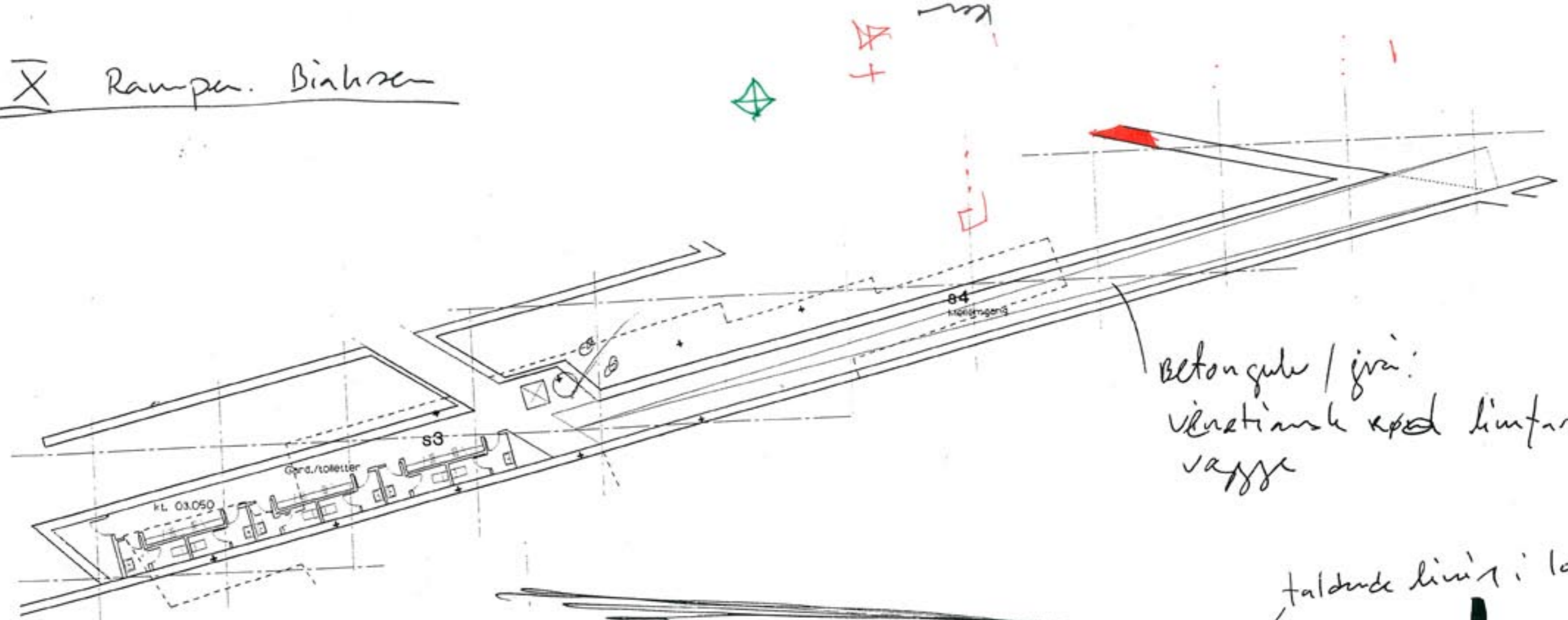
VIII Mediasal



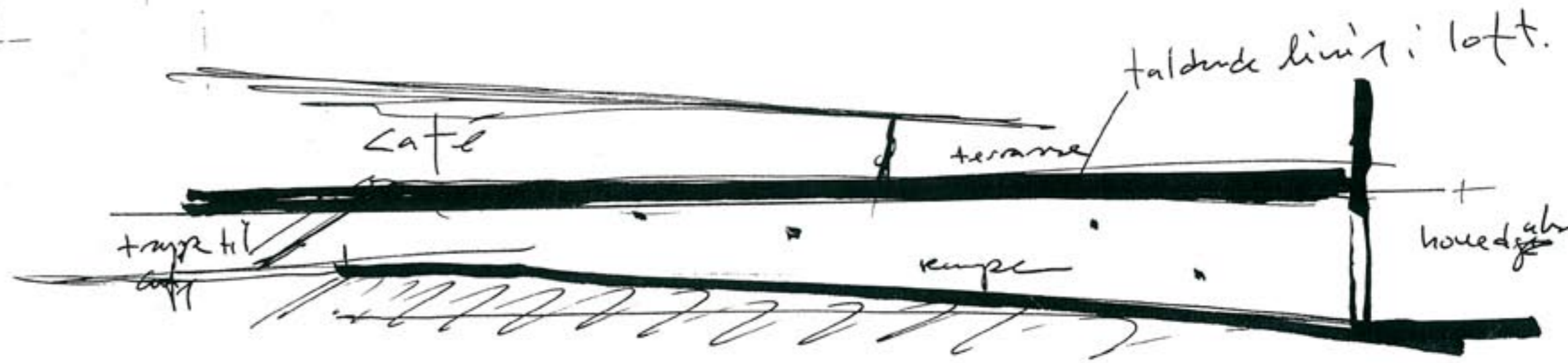
IX Cateia



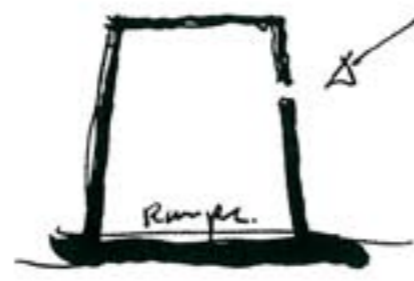
X Ramper. Birkese



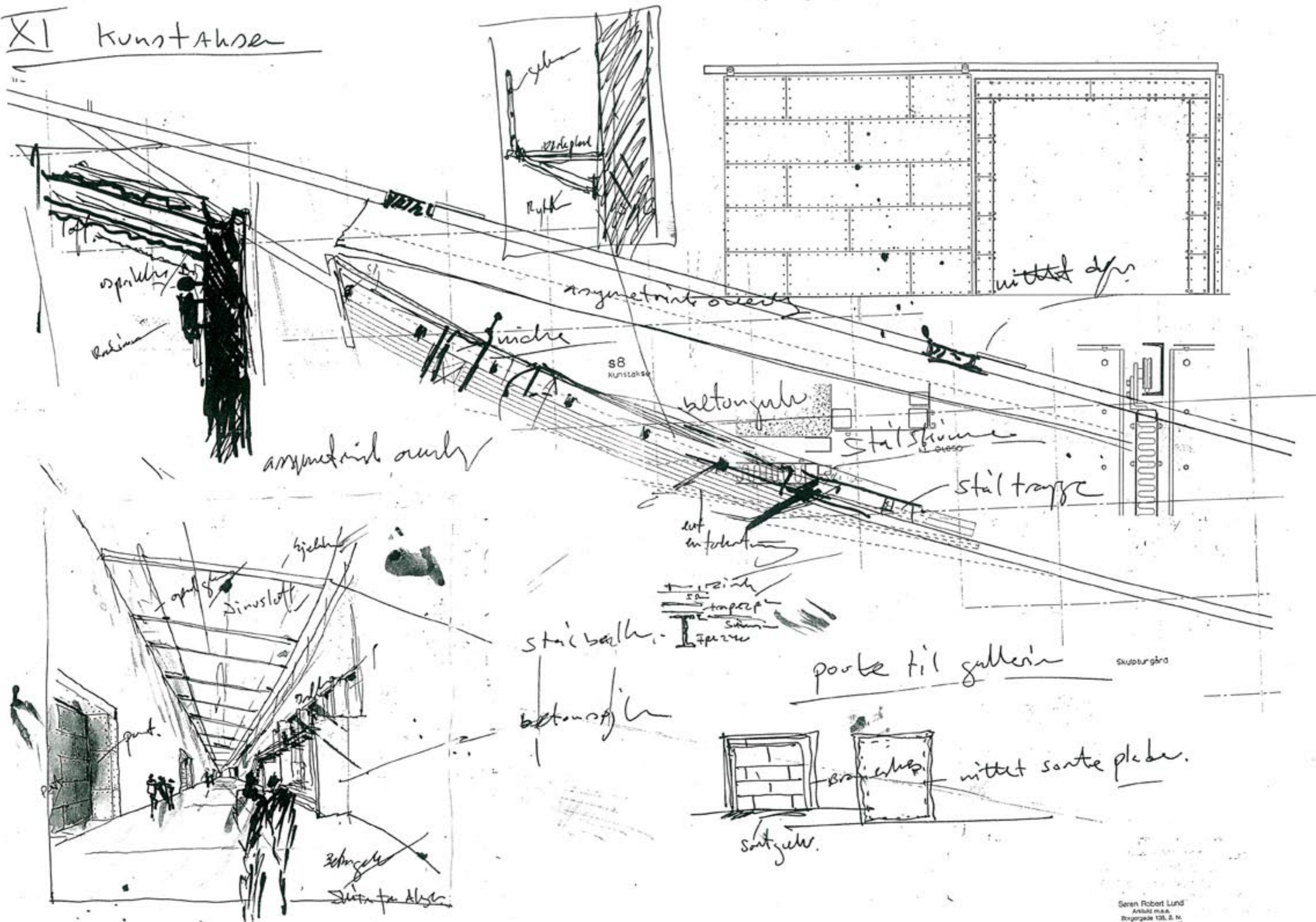
Betongulv / jern:  
ventilationsrør og limfugen  
væge



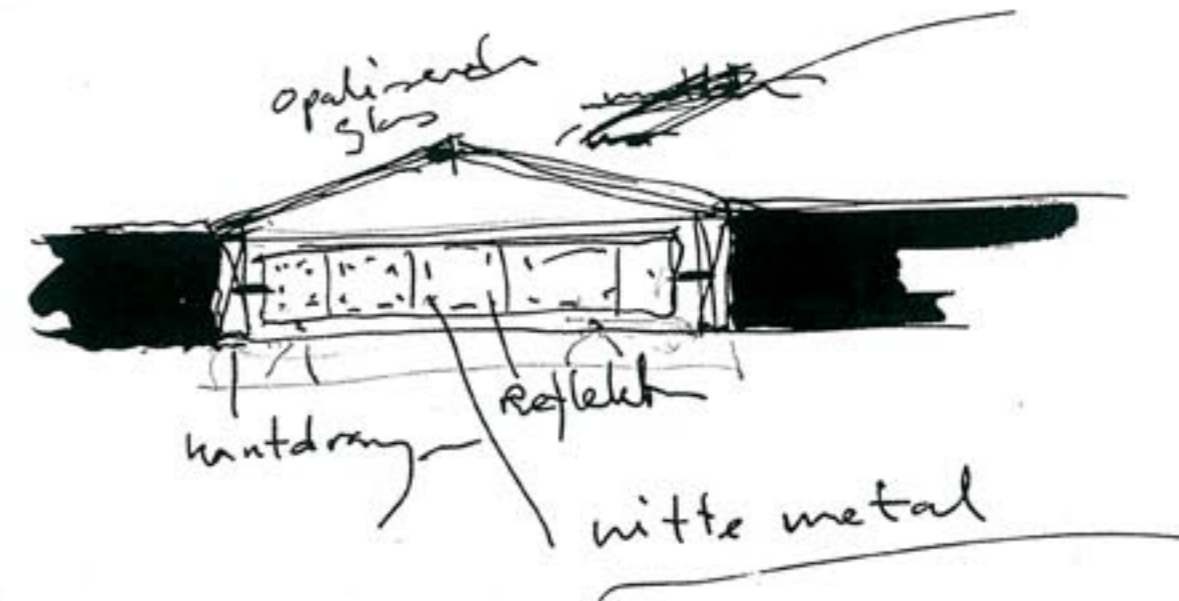
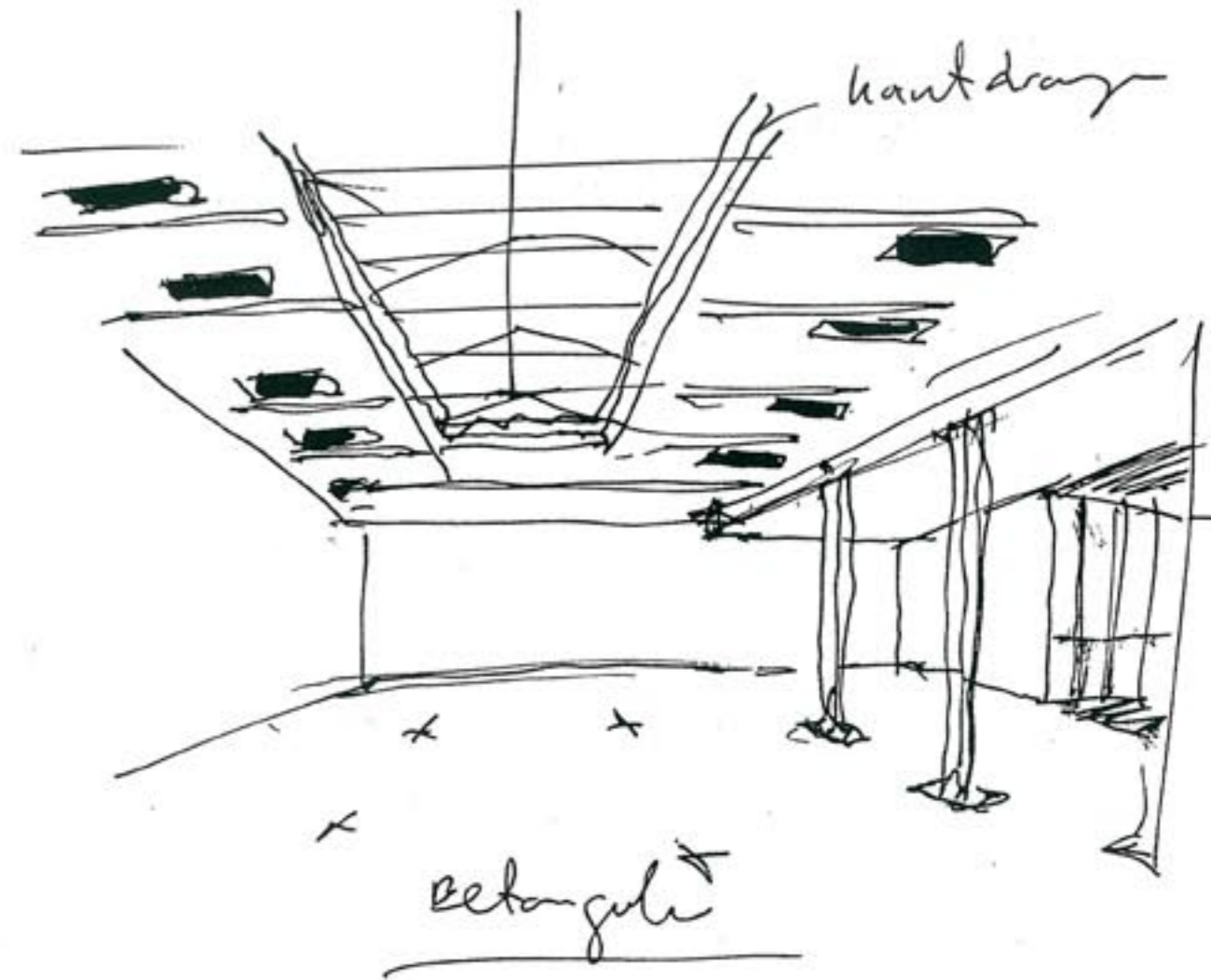
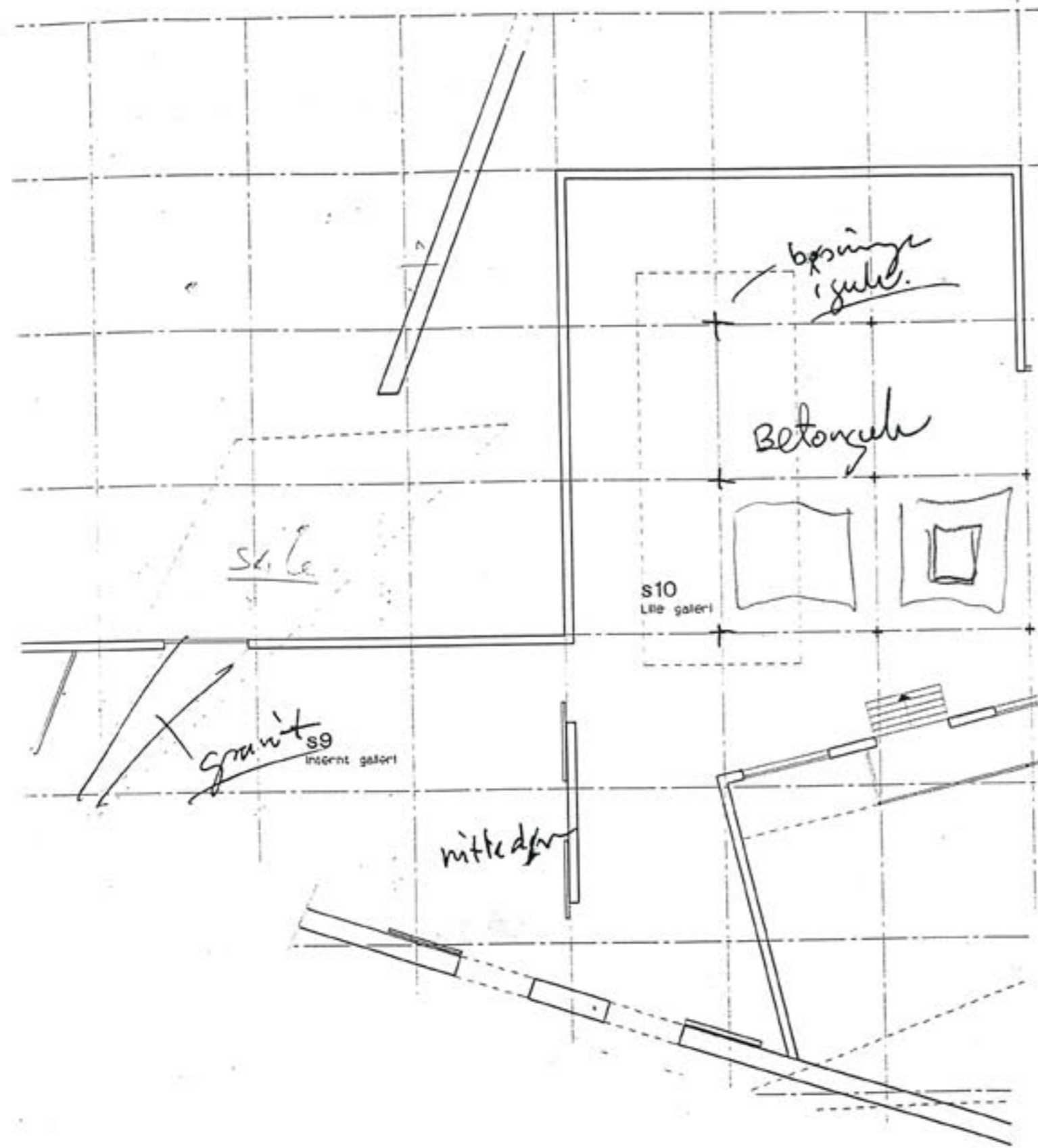
fire skydeskin.  
30 x 30 cm.



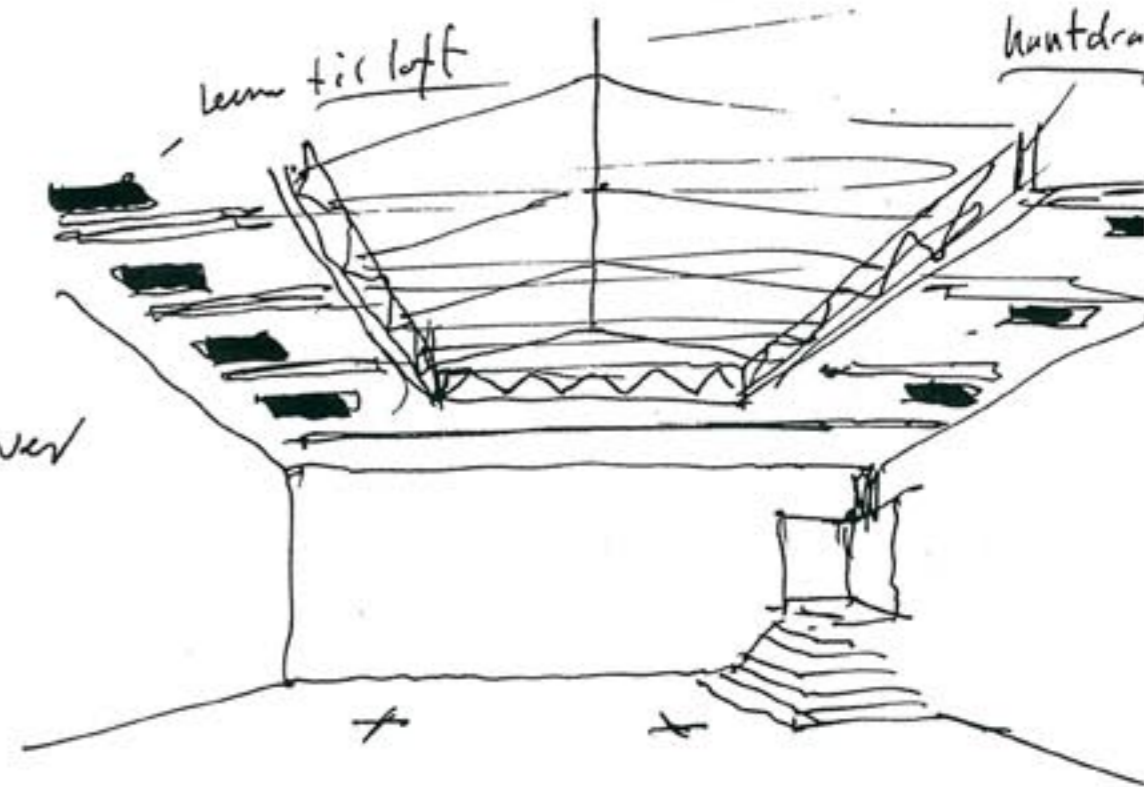
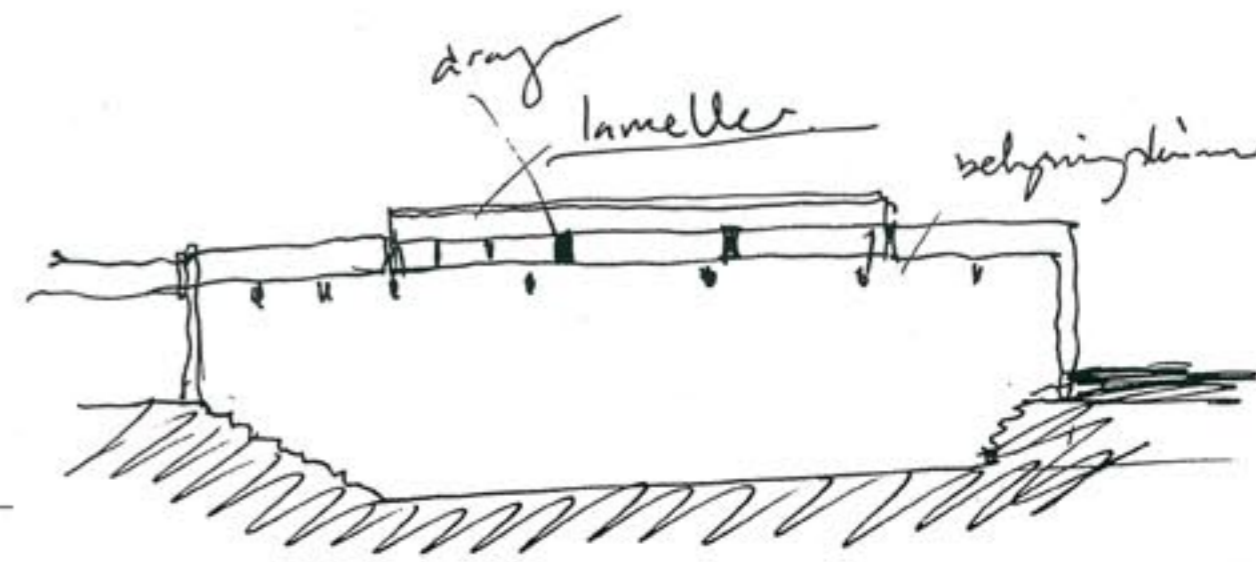
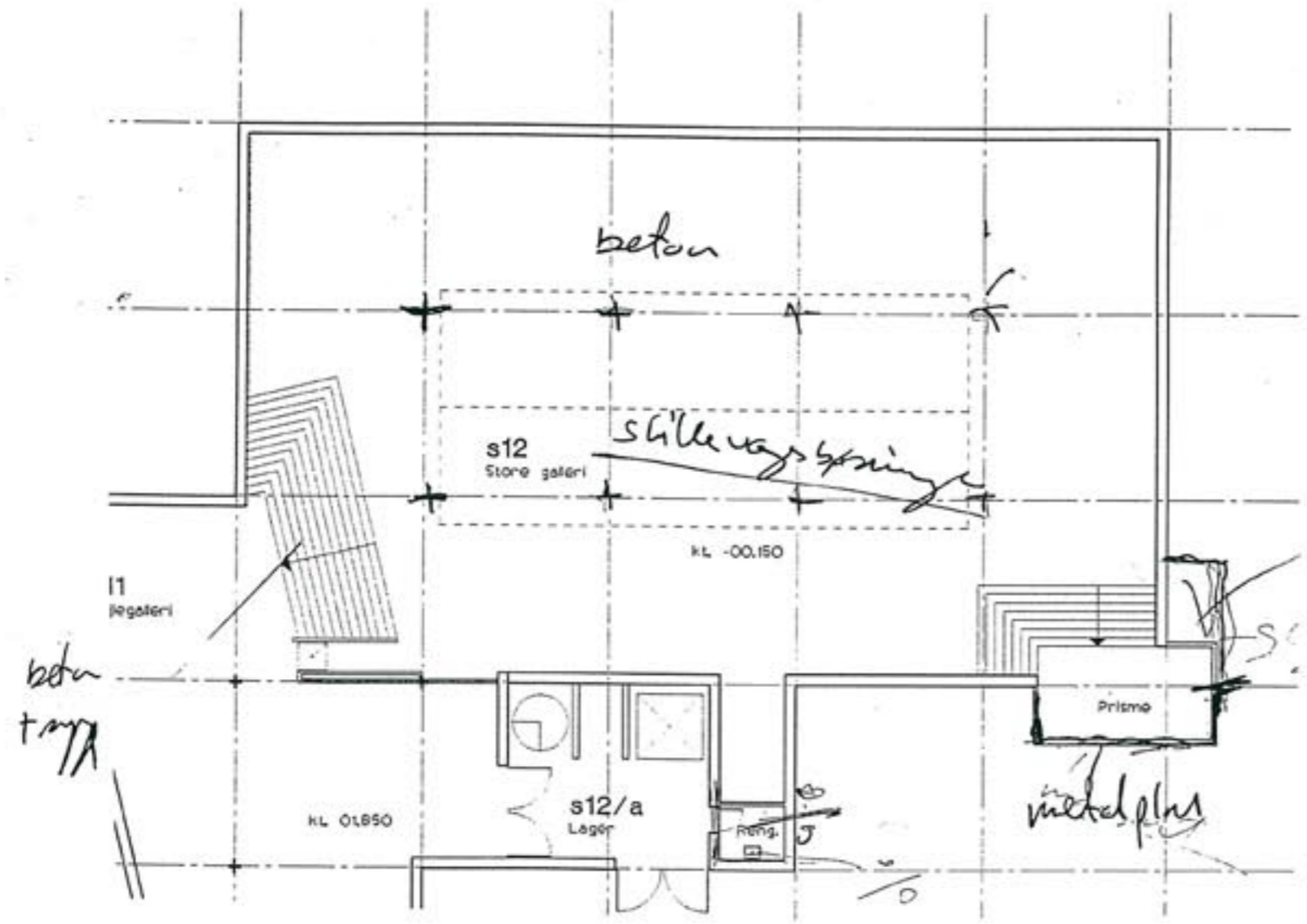
# XI Kunstakser



XII Lille galeri

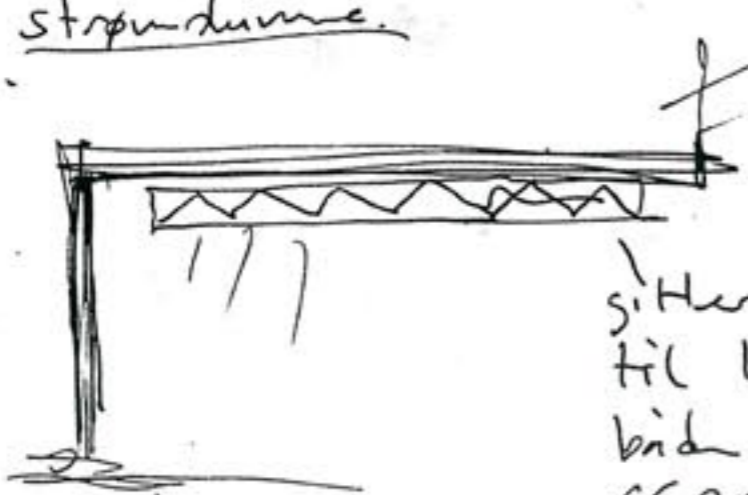


XIII Start galleri



belysning i gulv  
pr. 6m. til skillevejge

strøplade



loft lys



ramme

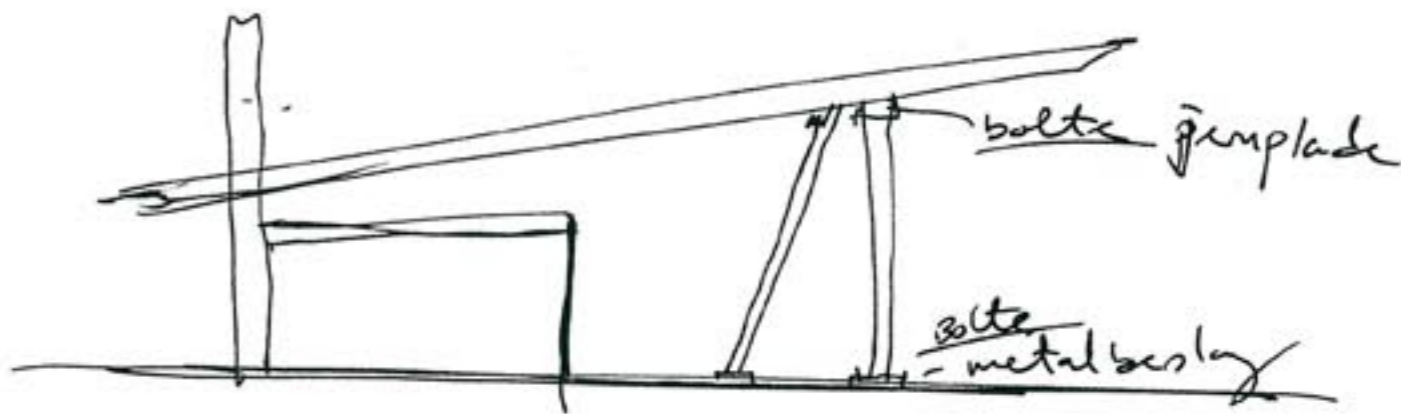
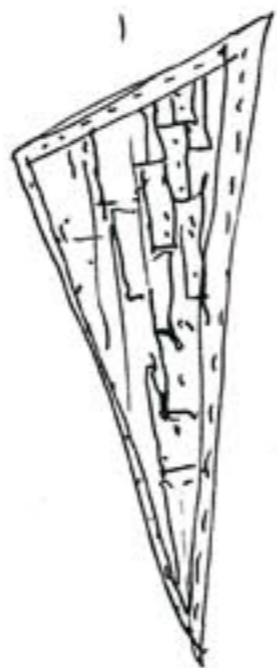
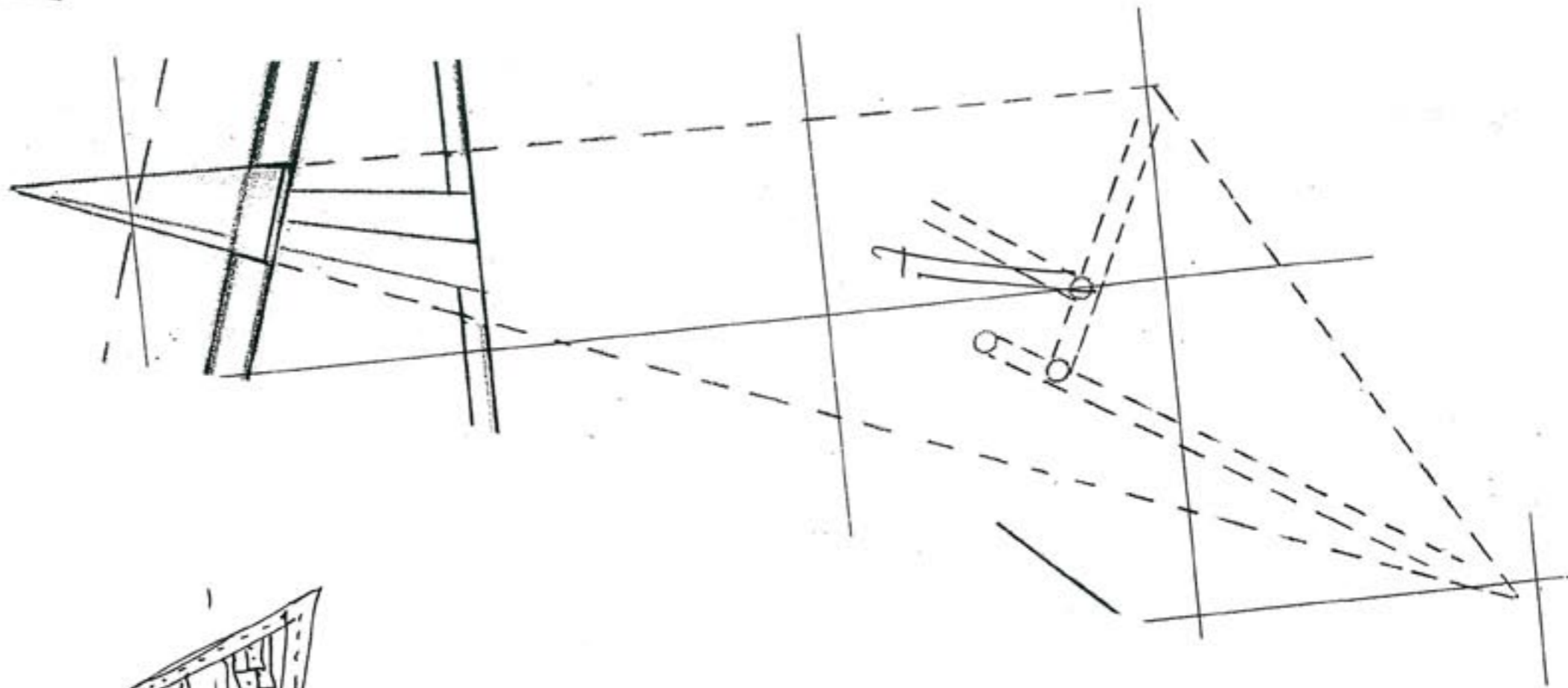
silicium hæstl.

mitte plade sortmalet

5. Herdrager pr. 3m  
til lug.  
både general belysning  
og varmbelysning

dimension  
længde 100 cm  
bredde 60 cm

XVII "vinge"





sløspinne II  
Type FO 9.

principper for NI  
saldede for sløspinne 11 12 14  
skulpturgjort

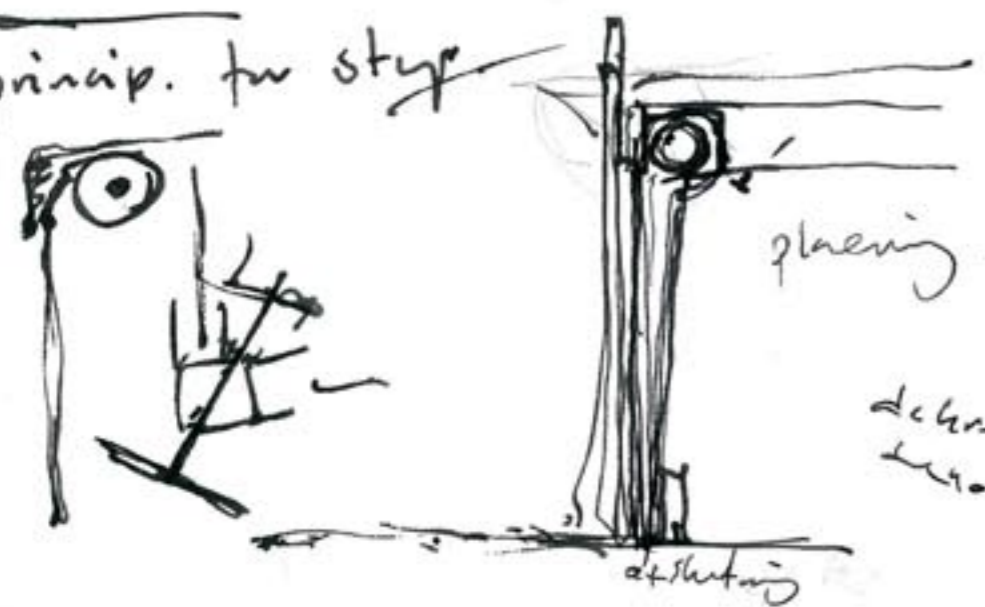
- Rullegitre (kulpering) placeres oppe under loft, siktes af under loft rulle ligger i flugt same loka som under loft. nederst kun rullegitre placeres siktes af med stål.
- Rullegitres styr placeres siktes af samkøbing med pynte profile (apsvings) de placeres diagonalt i hjørne. styren vil dette special fremstilles med
- Løsløstings styrt. Følgelig behøver specialt fremstilles i stål.
- I linie mellem facade profiler, glædelig og korrigeres, placeres de de korrigerer

prisme II styr



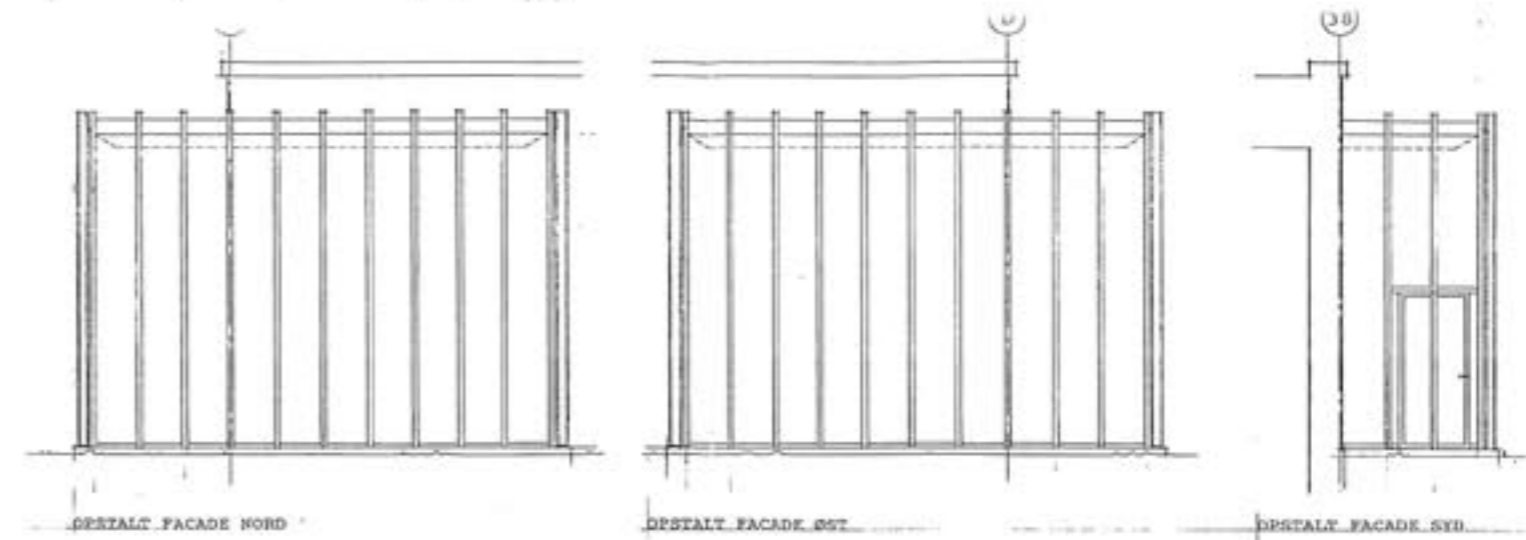
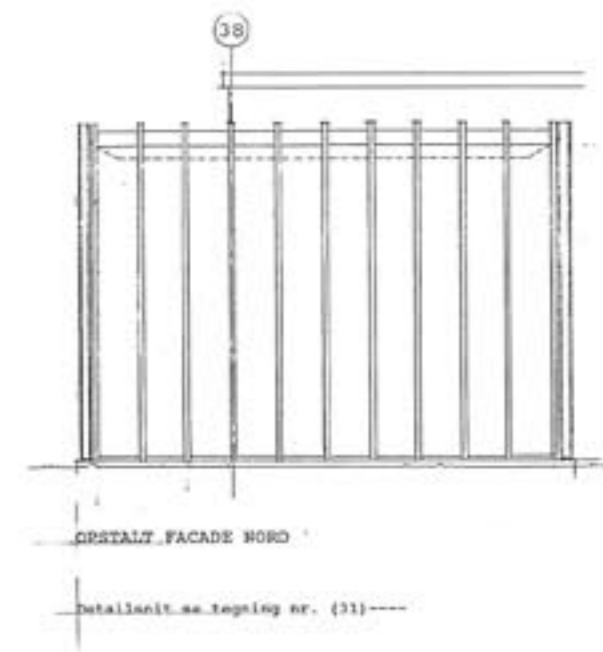
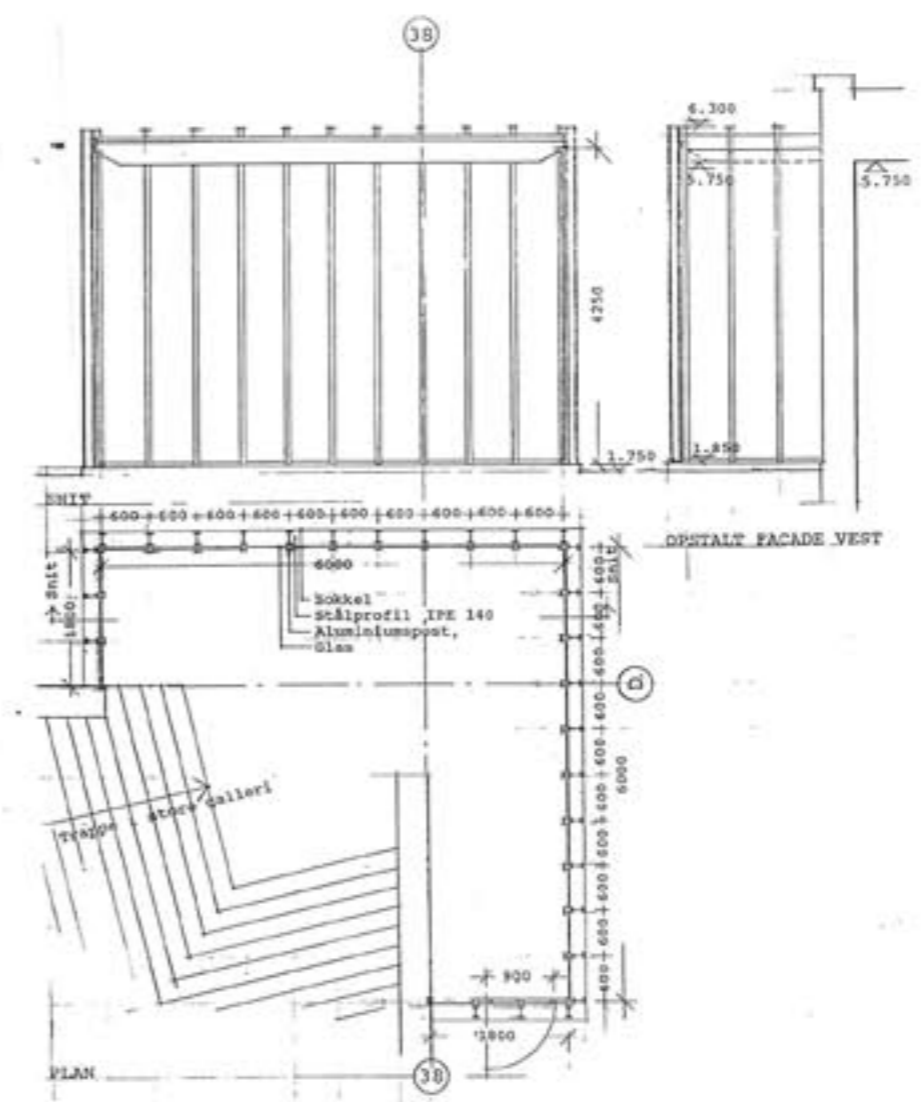
styr 2 stykker træes i  
væg.  
tre læse styr. lag.  
spænd.  
4 gitre spænd.  
2 stel  
2 styr

princip. for styr



placering af gitre.

de korrigerer  
de korrigerer



(3)

